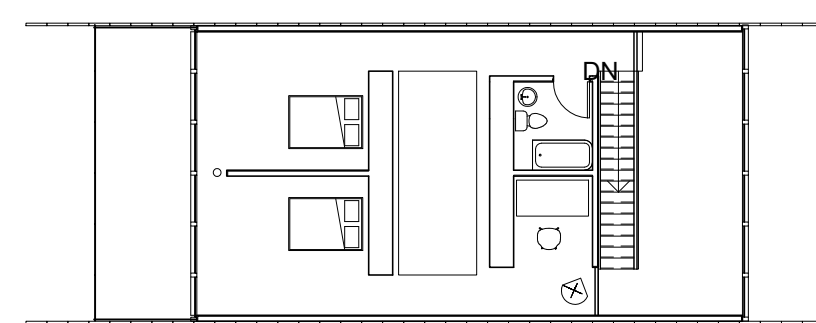
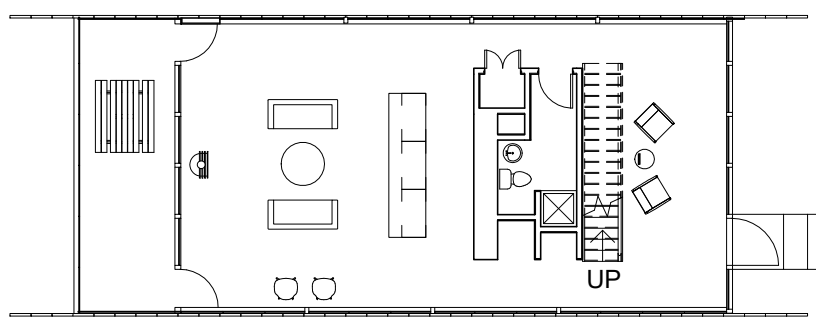
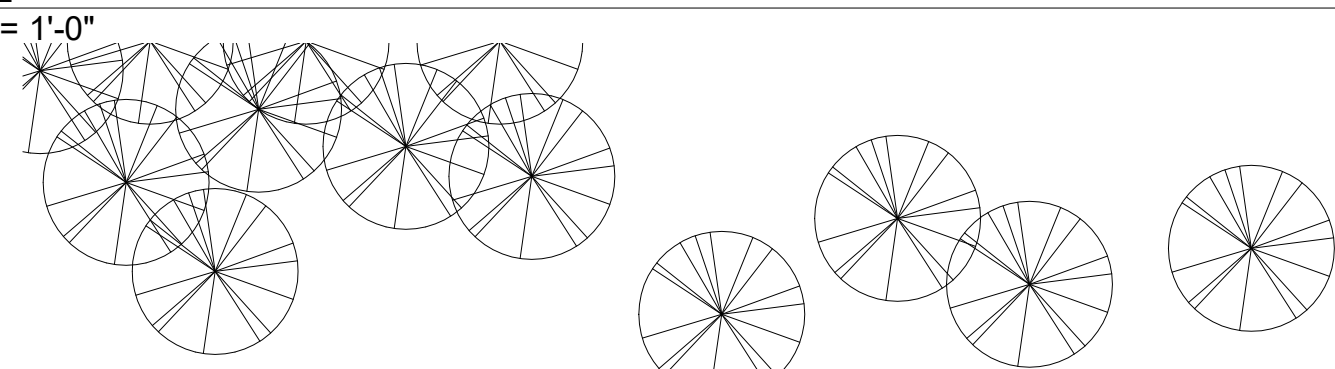


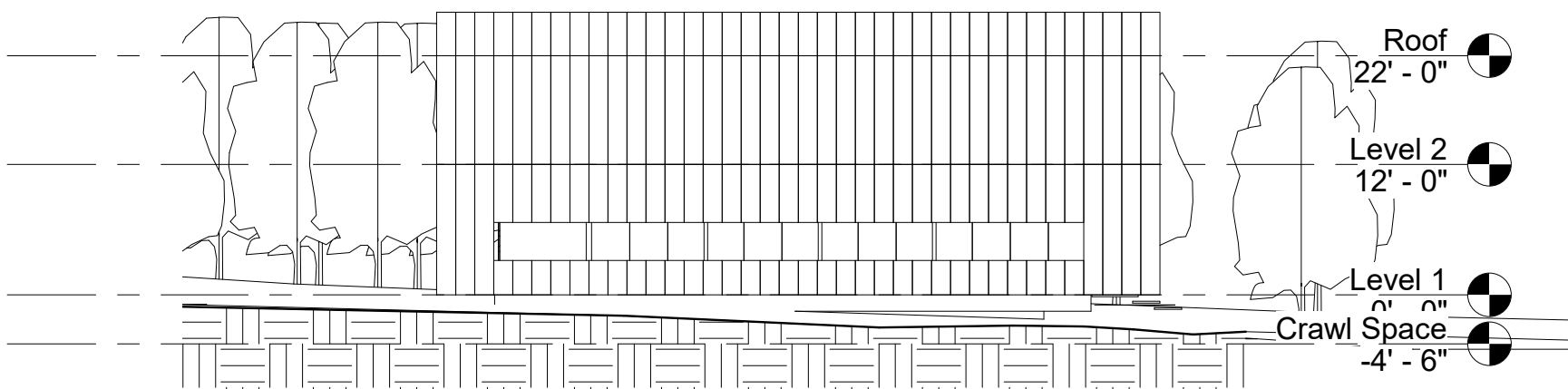
1 Site
1" = 20'-0"



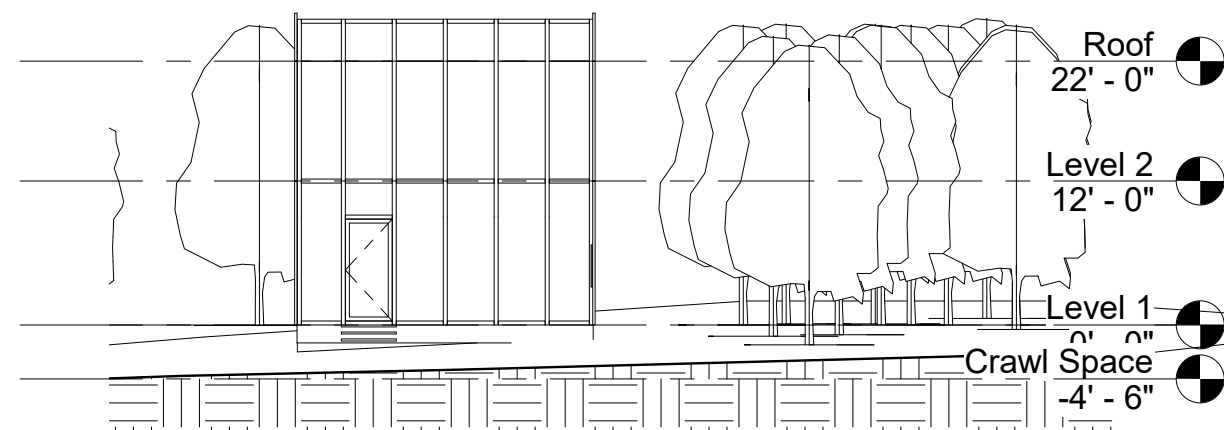
2 Level 2
1/16" = 1'-0"



3 Level 1
1/16" = 1'-0"



4 South Elevation
1/16" = 1'-0"



5 East Elevation
1/16" = 1'-0"



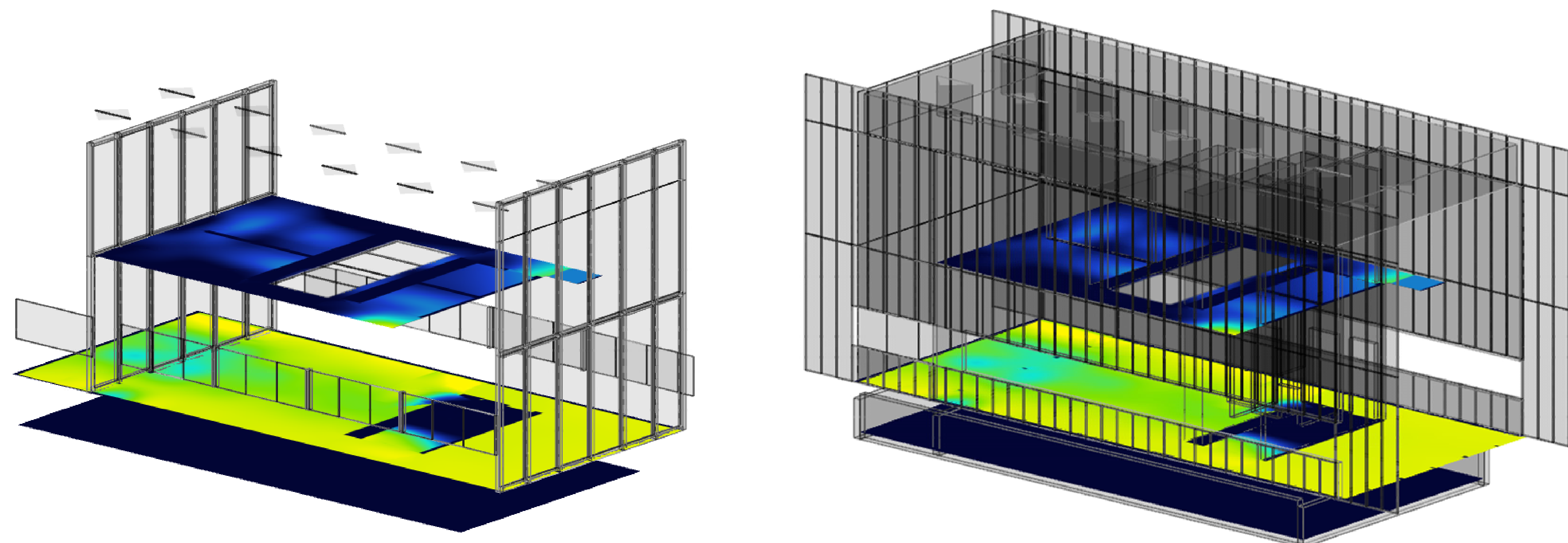
Office Perspective
//Desk - Parametric Object



Kitchen to Porch Perspective
//QR Code from Kitchen Center



Exterior Living Room Perspective
//QR Code from Living Room Interior



Percentage of occupied hours where illuminance is at least 28 footcandles, measured at 2.79 feet above the floor plate.



Section Perspective

Salt Point House

Architect: Thomas Philer

Location: Salt Point, NY

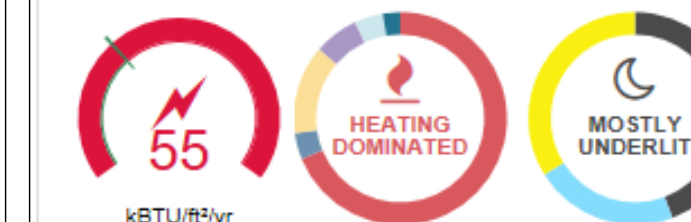
Constructed: 2007



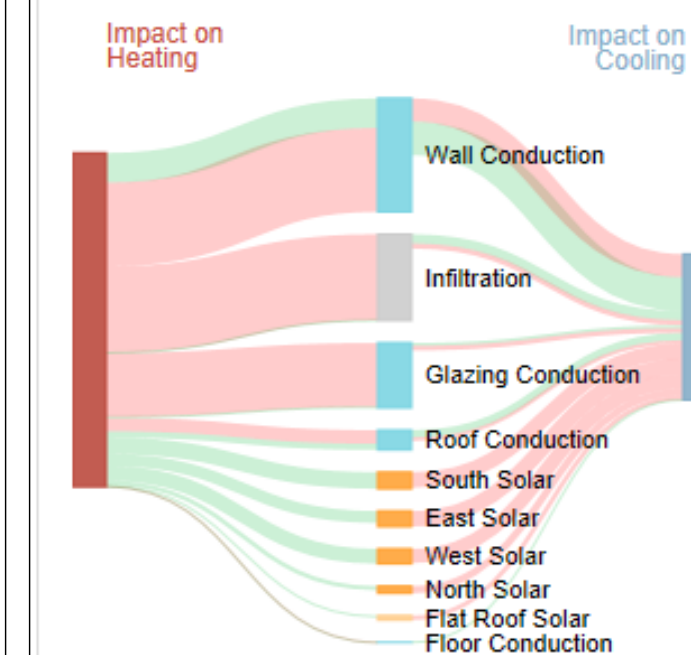
Residenti in Salt Point, NY 125...

Properties

Total Floor Area 2,092 ^{sq}ft



Gains & Losses Guidance



Salt Point House

Case Study

by Tricia Rowedder

Date 12.04.2018

A001

Scale As indicated