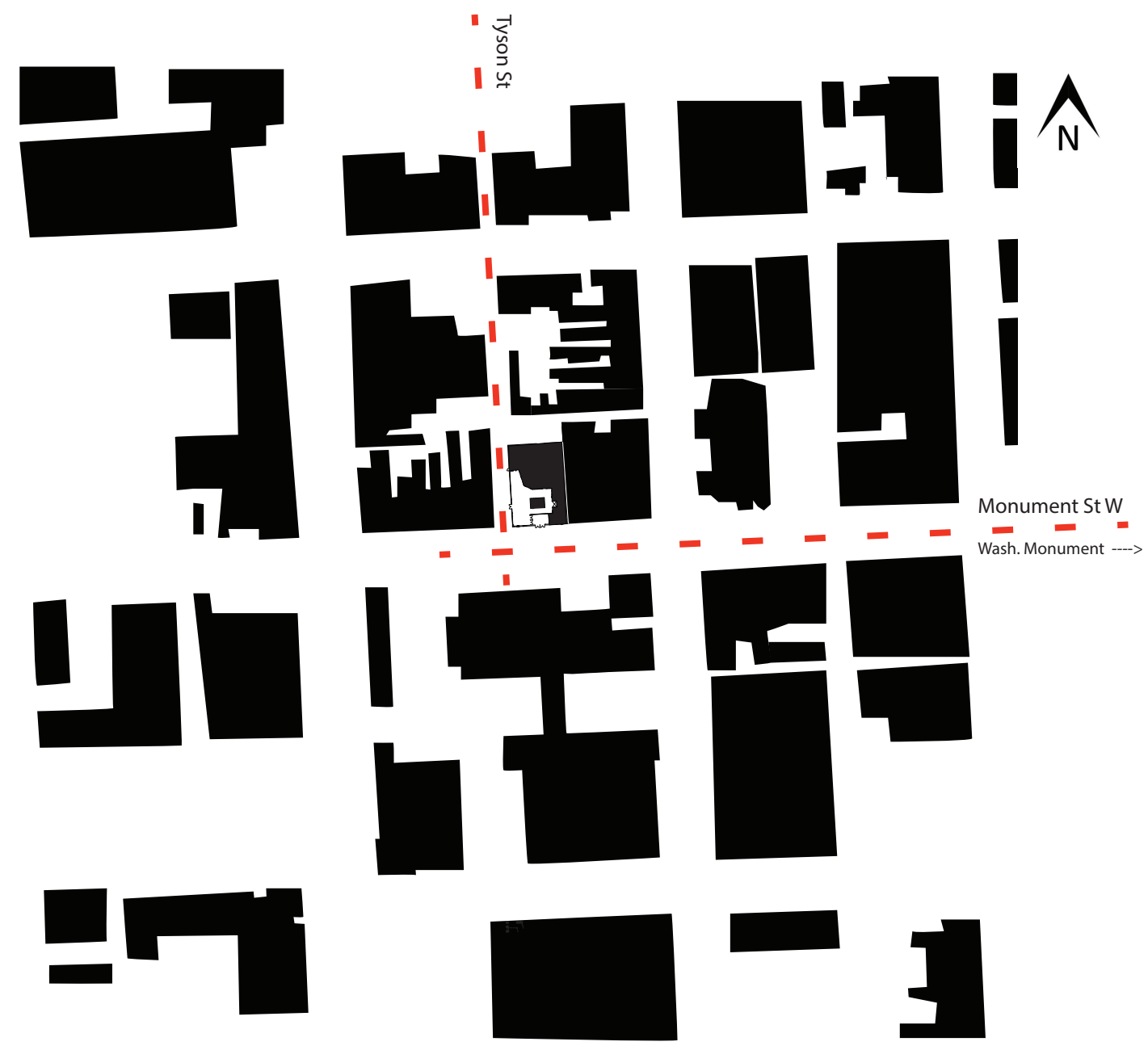


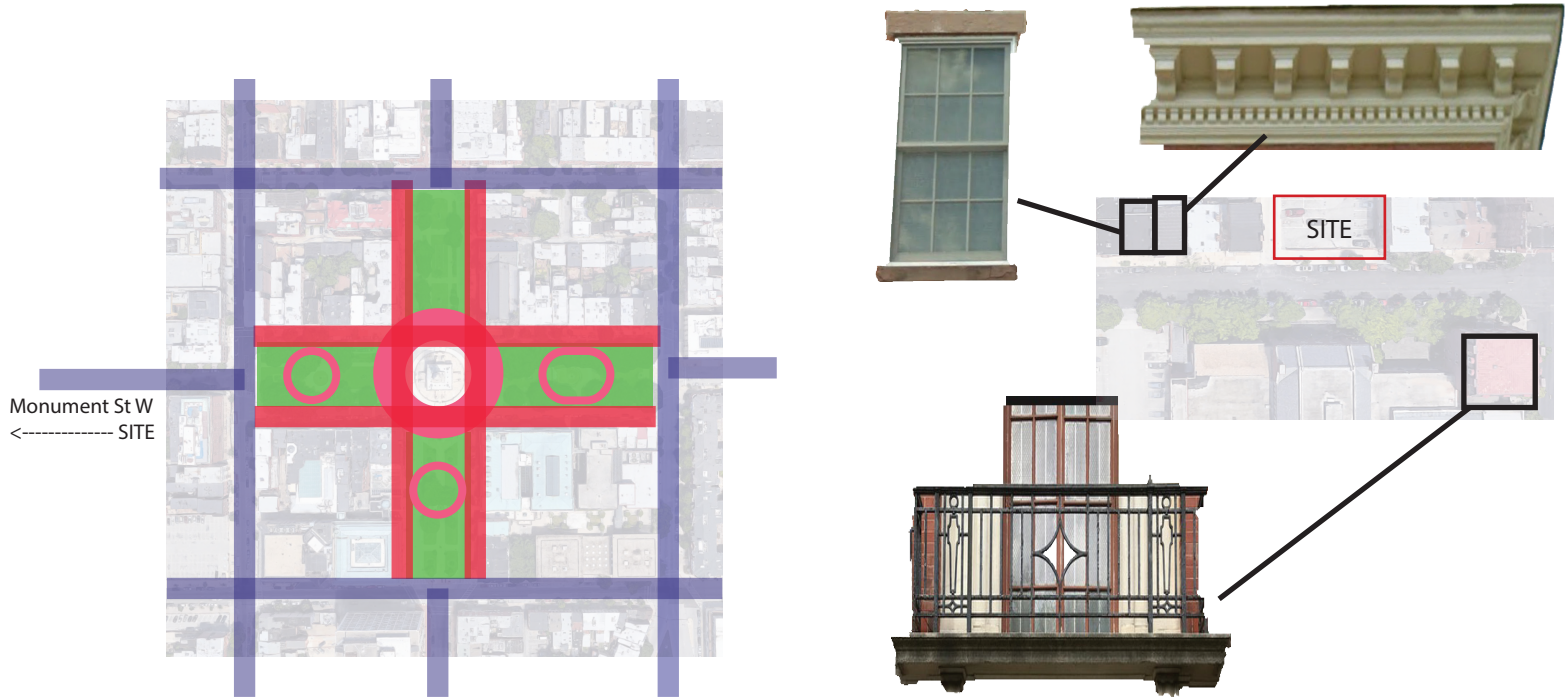
Baltimore School of Traditional Music

Eric Resnick

Site: Baltimore, MD - Monument & Tyson St.



Scale: 1" = 200'

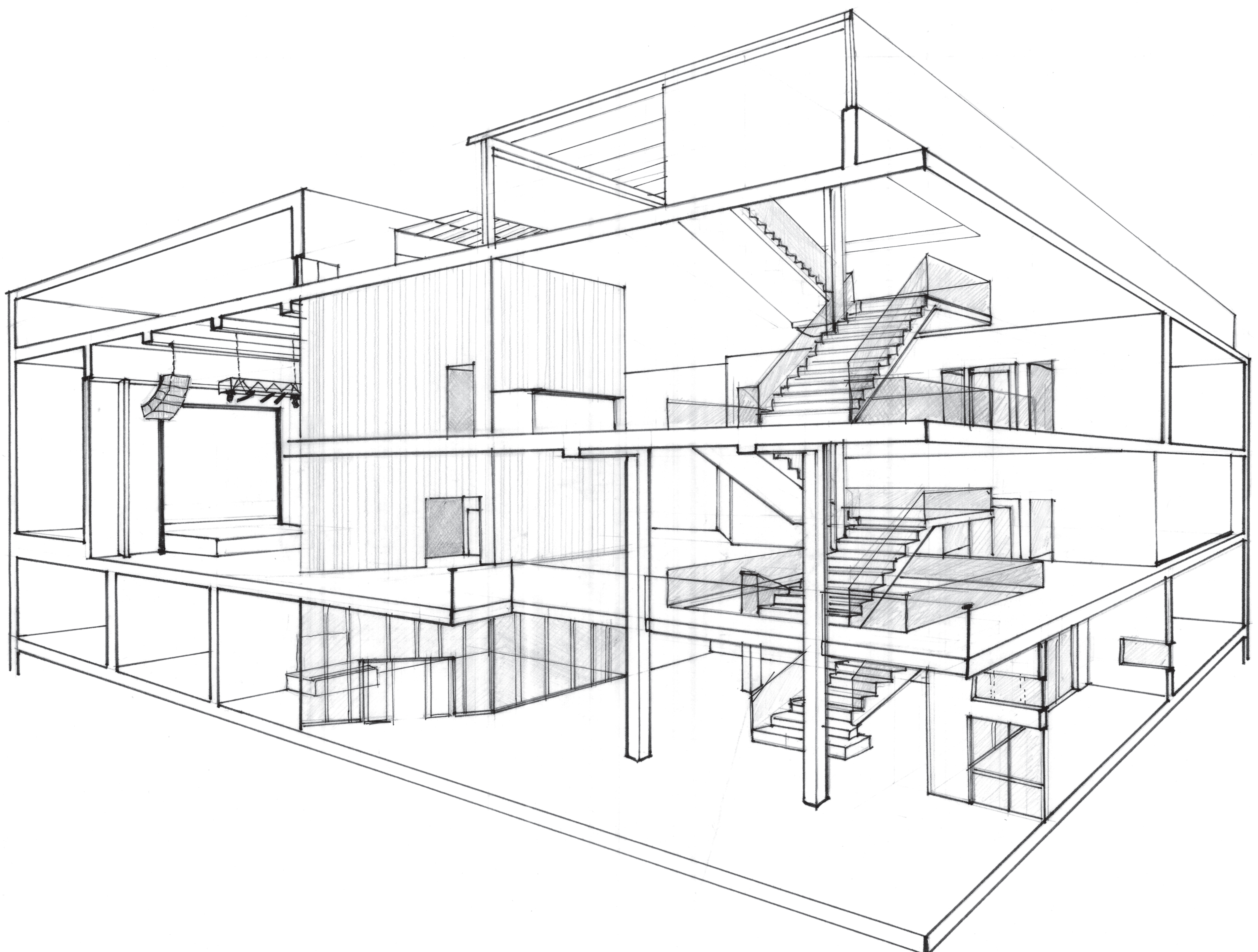


Geometry of Mt. Vernon Pl.

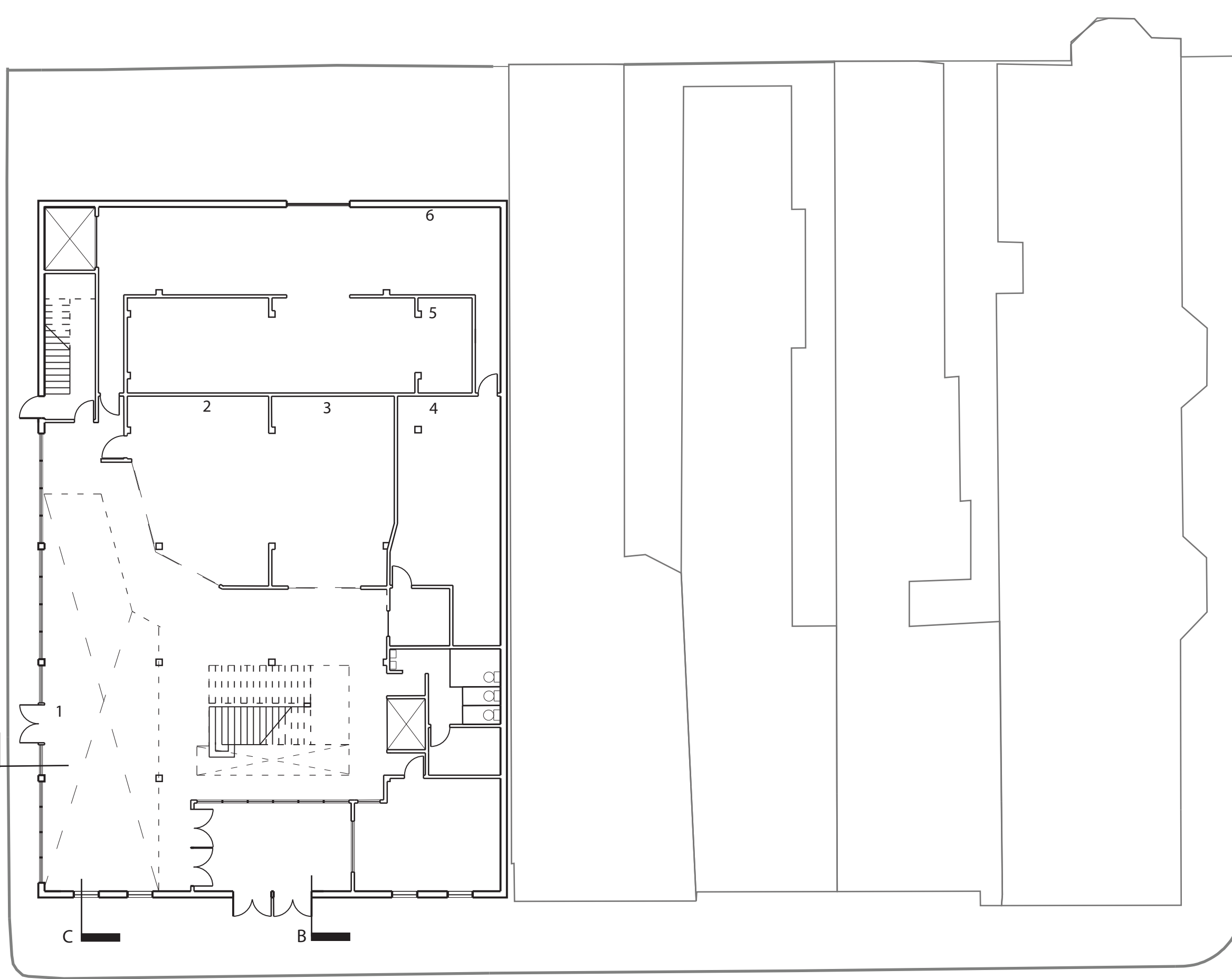
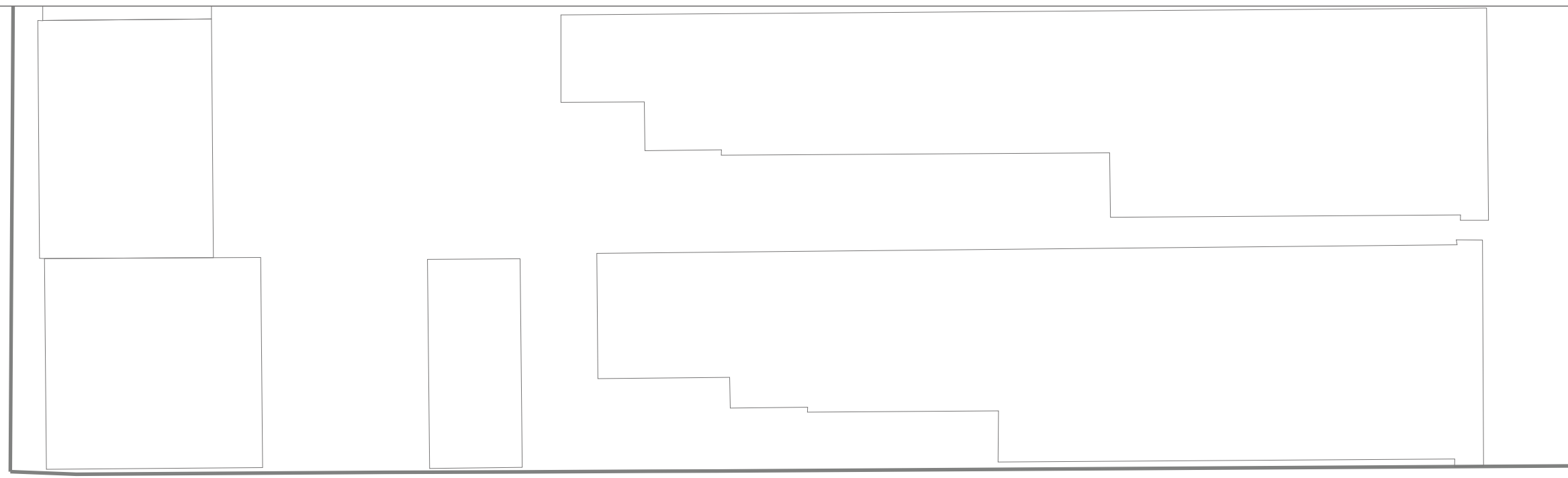
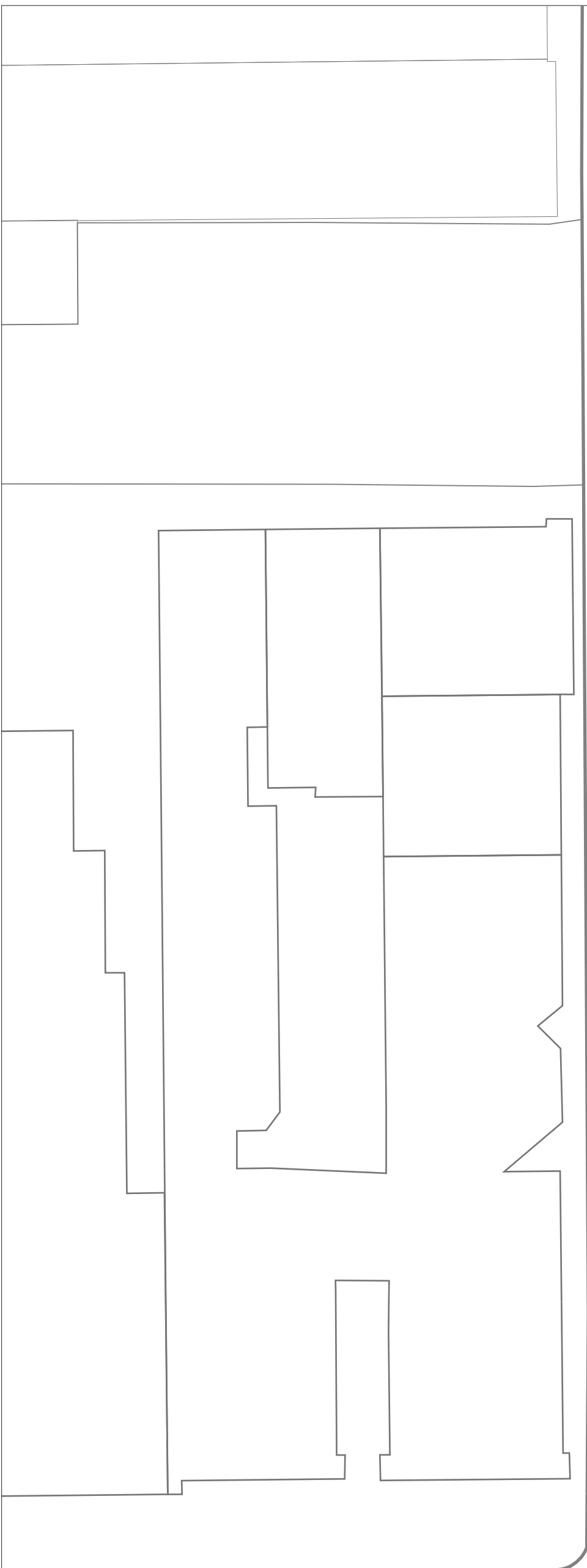
Architectural Precedents



Perspective: Monument St. looking East



Section Perspective: lobby, cafe, stairway, music hall

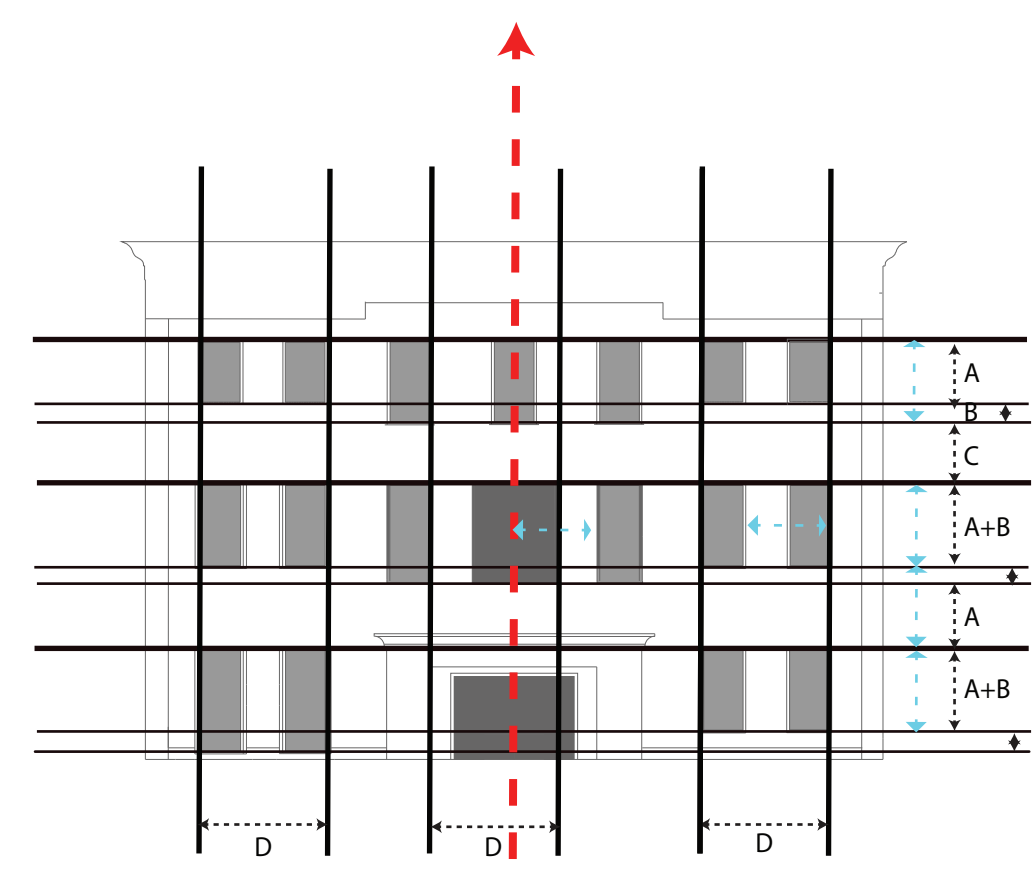
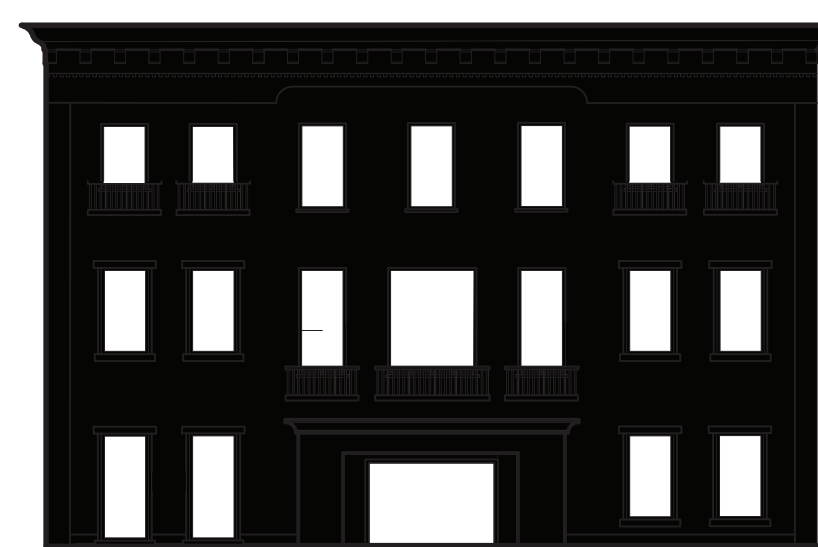
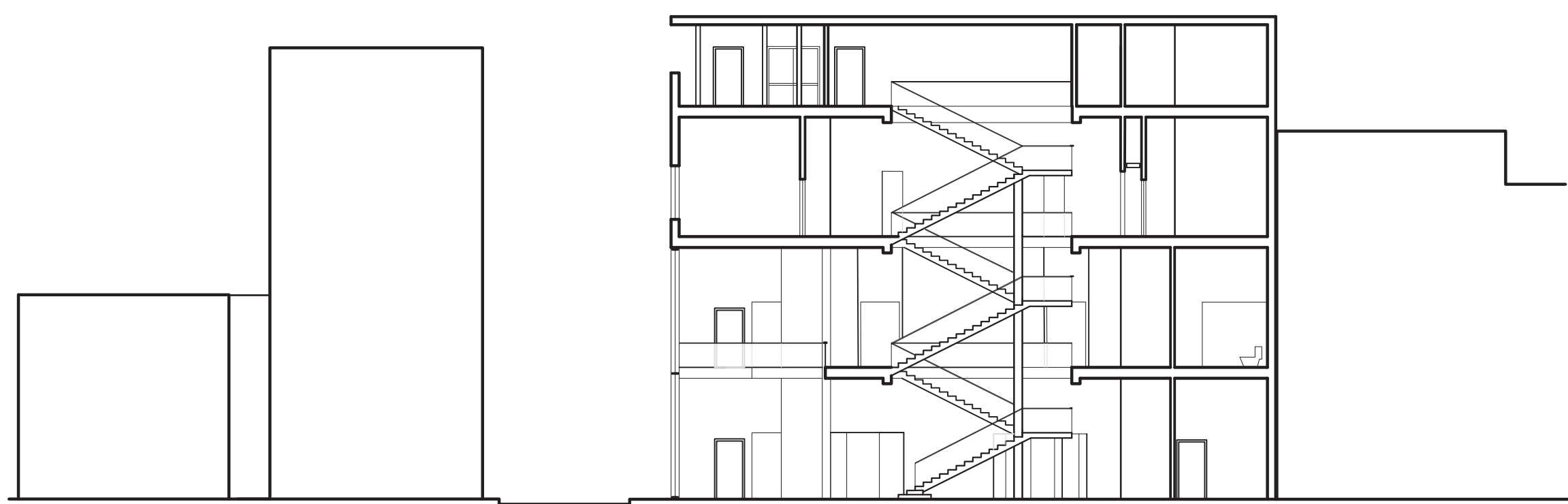
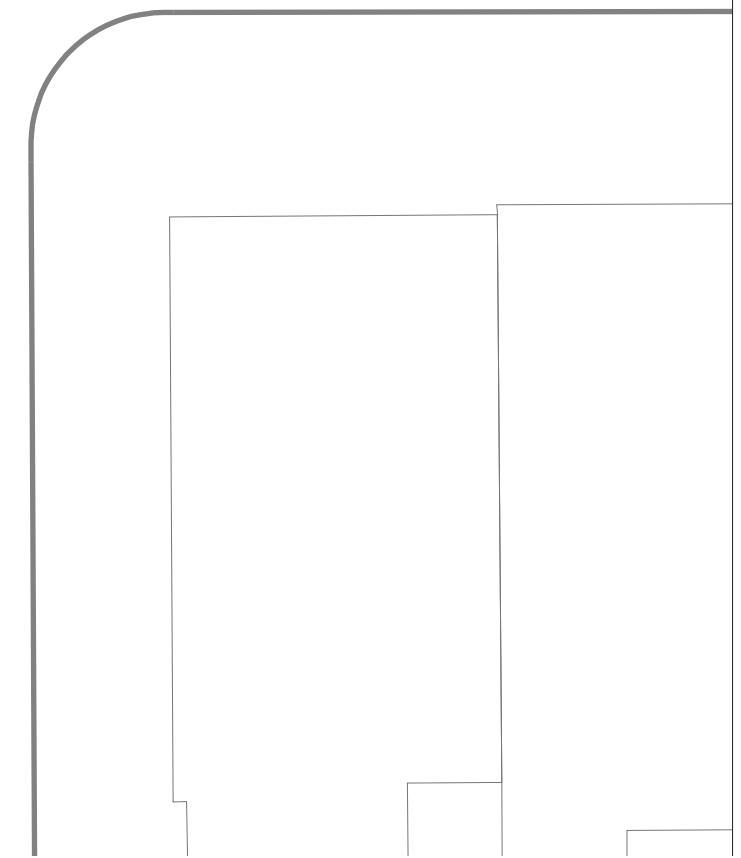


- Key:
- 1) Lobby
 - 2) Cafe
 - 3) Retail
 - 4) Mechanical
 - 5) Storage
 - 6) Loading
 - 7) Music Hall
 - 8) Green Room
 - 9) Lounge
 - 10) Jam Space
 - 11) Class
 - 12) Practice
 - 13) Office
 - 14) Roof Terrace
 - 15) Stage
 - 16) Concessions

Plan: 1st Level with Site
Scale: 1/16" = 1'-0"

W Monument St

Park Ave



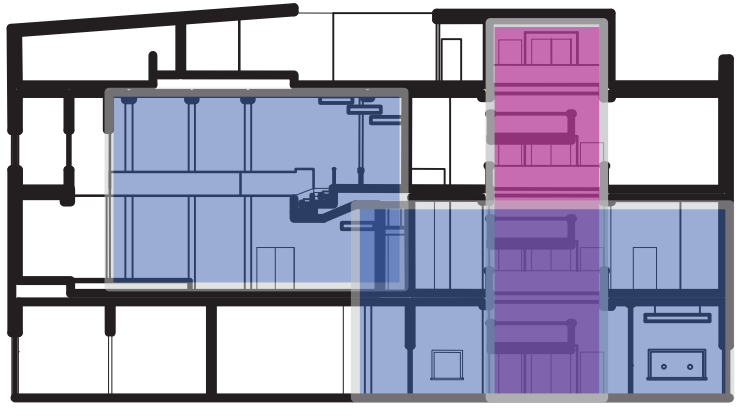
Facade - Figure Ground

Facade - Guidelines - Symmetry

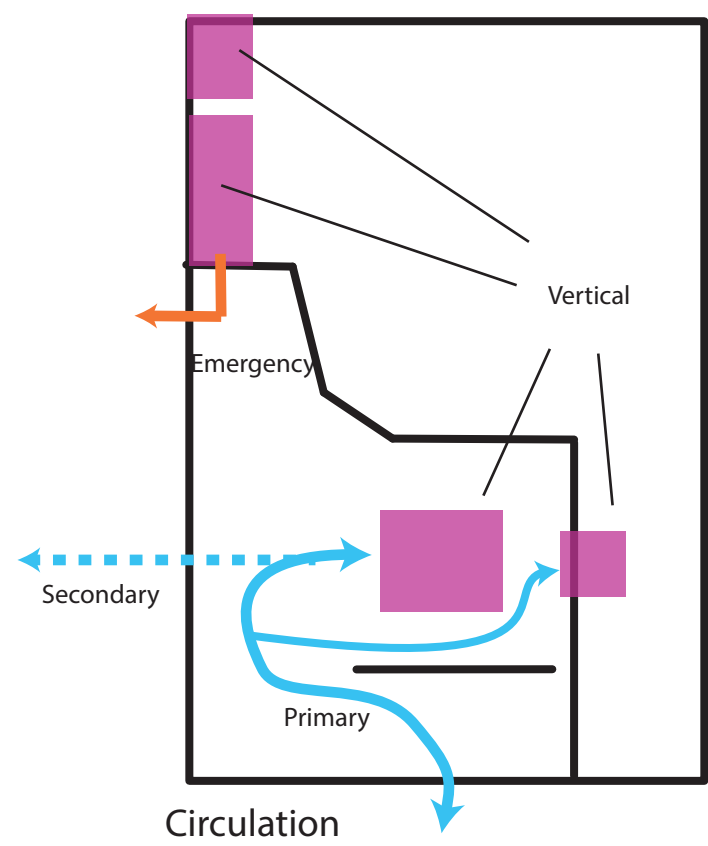
Lateral Section: A
Scale: 1/16' = 1'-0"



Elevation: South
Scale: 1/16th = 1'-0"



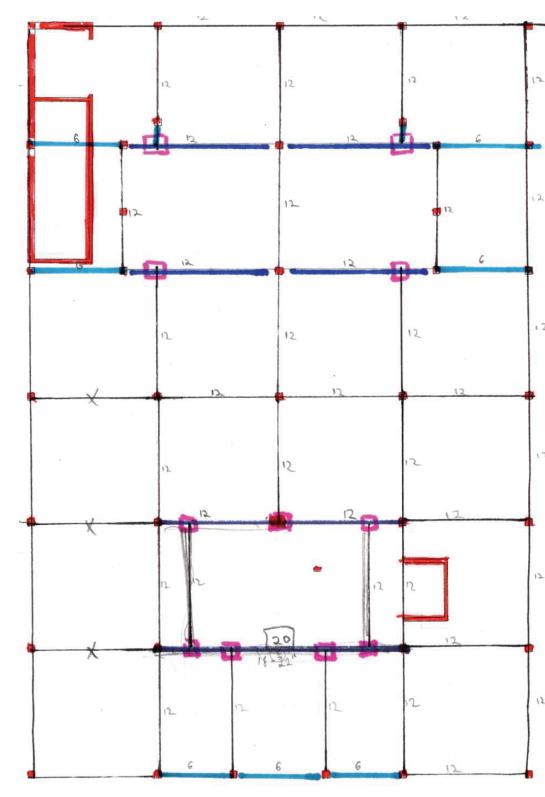
Vertical Space



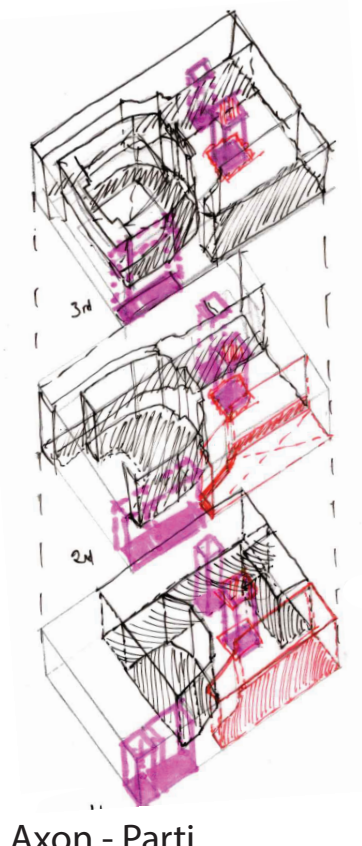
Circulation



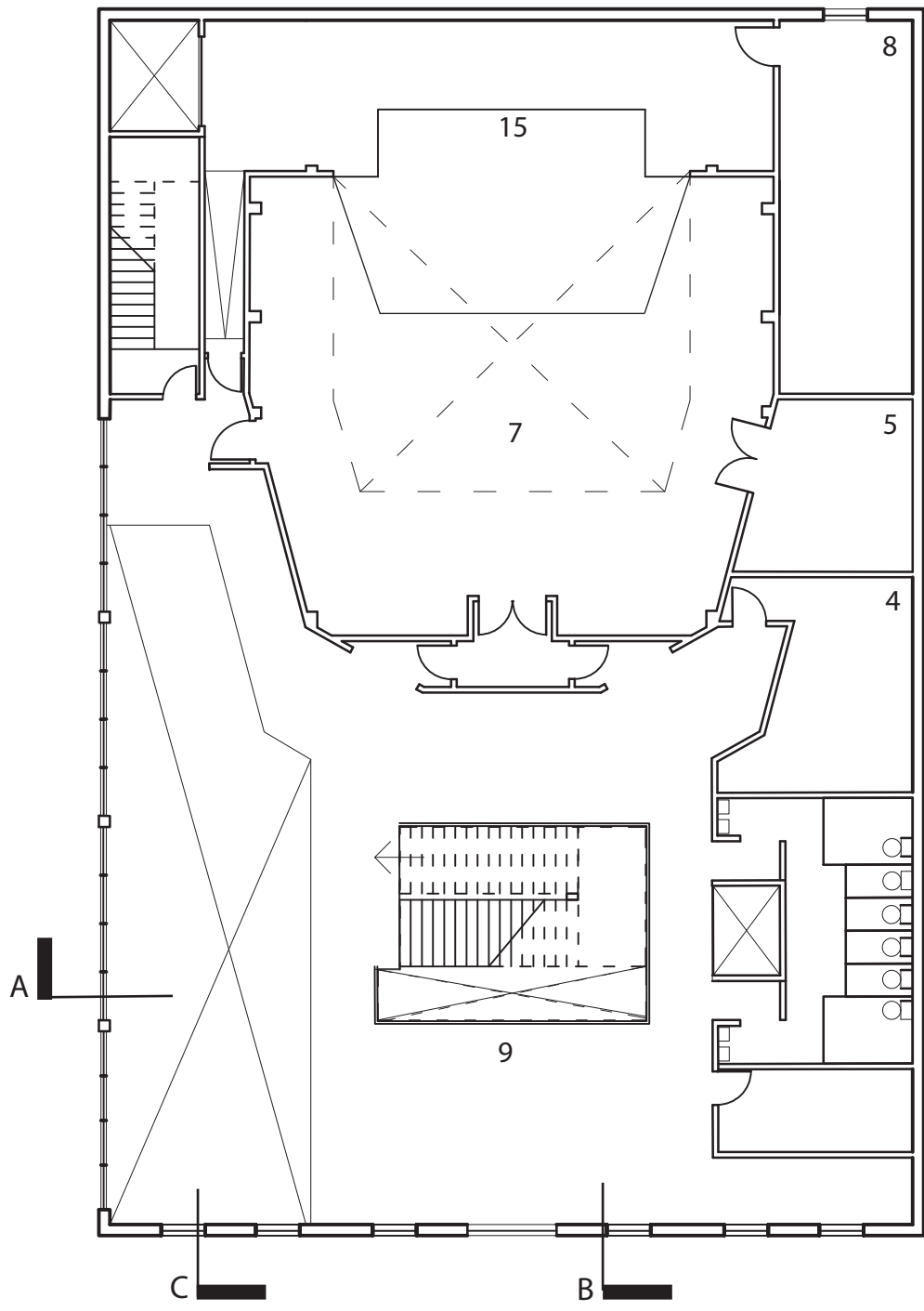
Mt. Vernon Motif - 1st Level



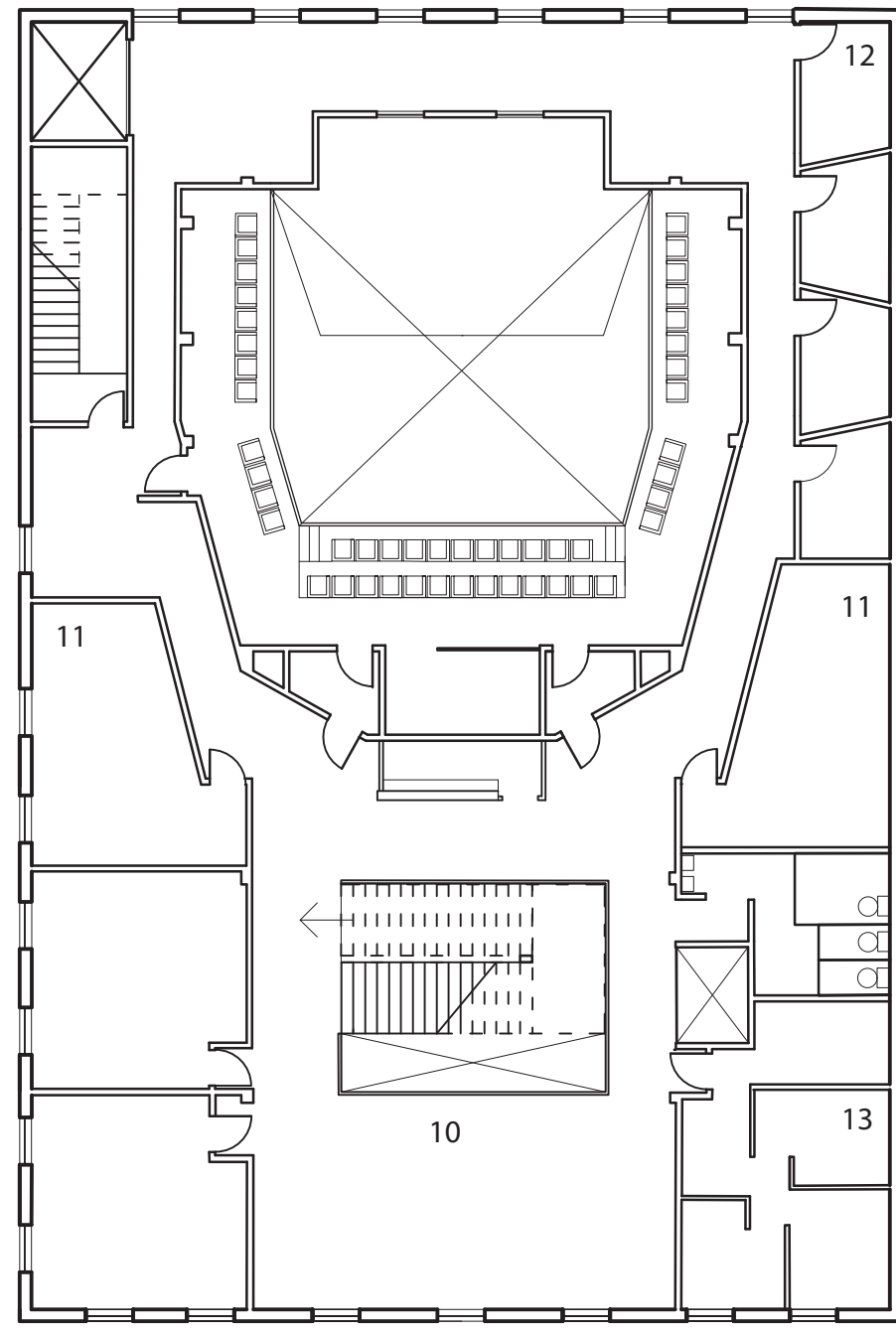
Structure



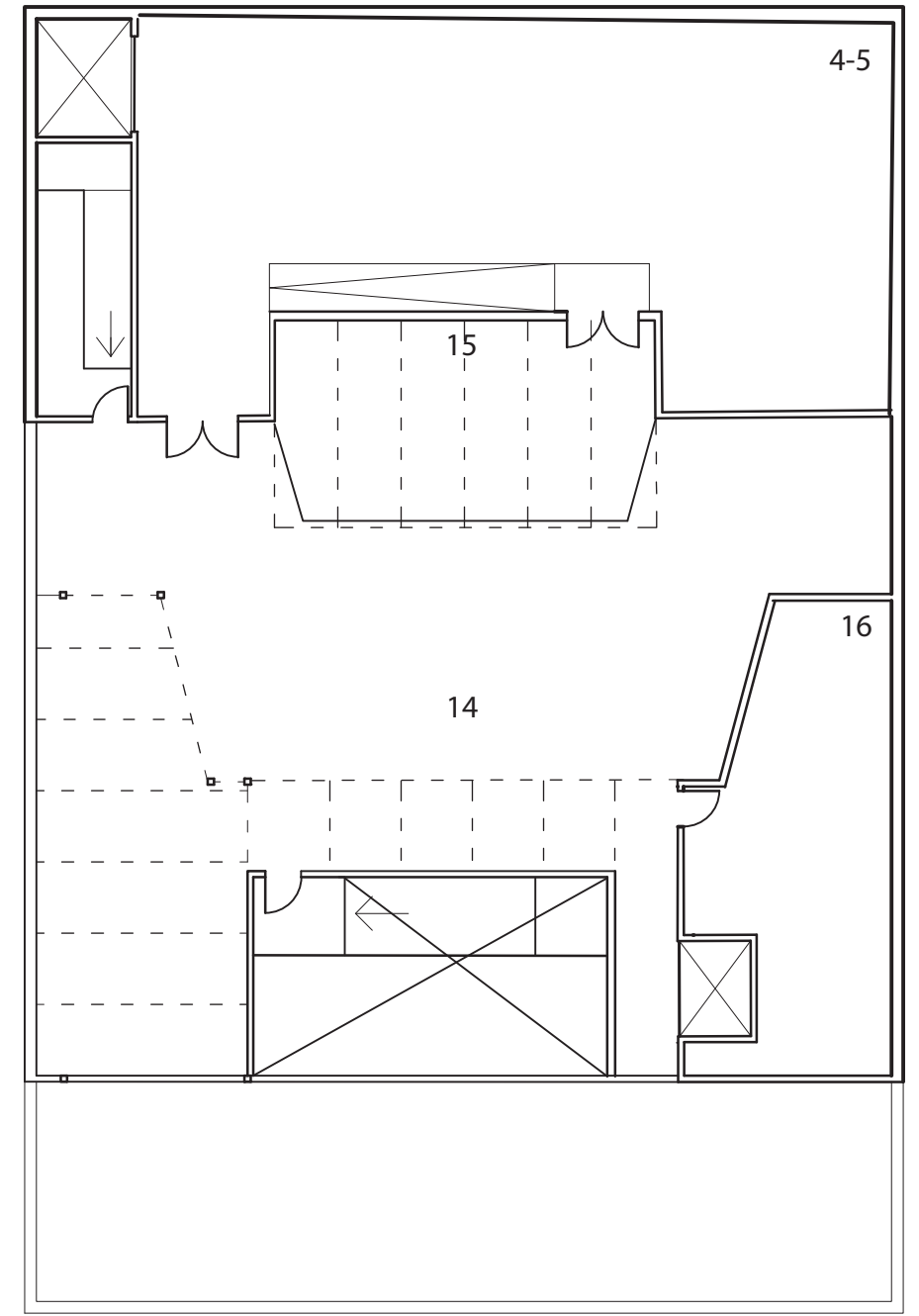
Axon - Parti



Plan: 2nd Level
Scale: 1/16" = 1'-0"



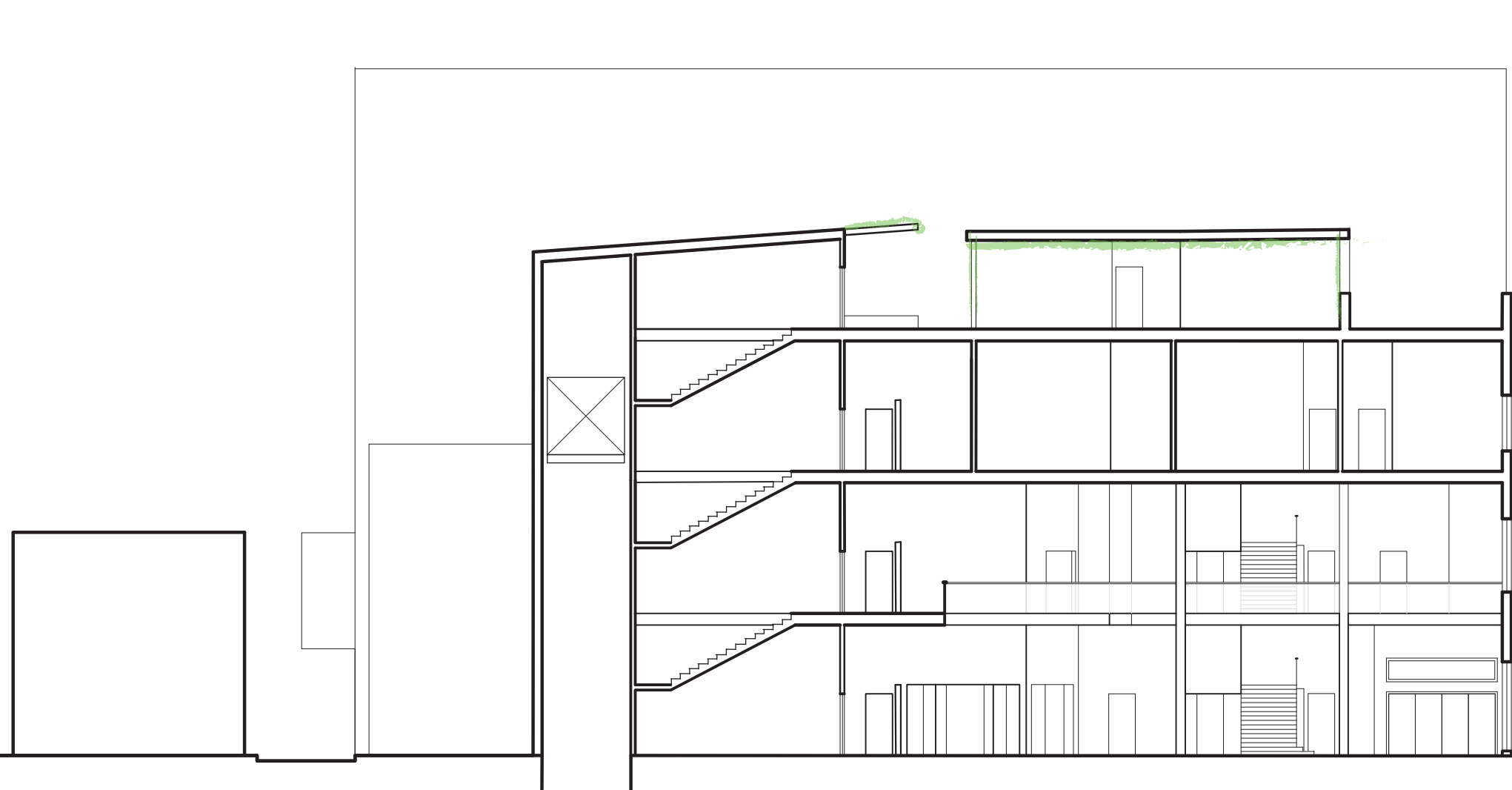
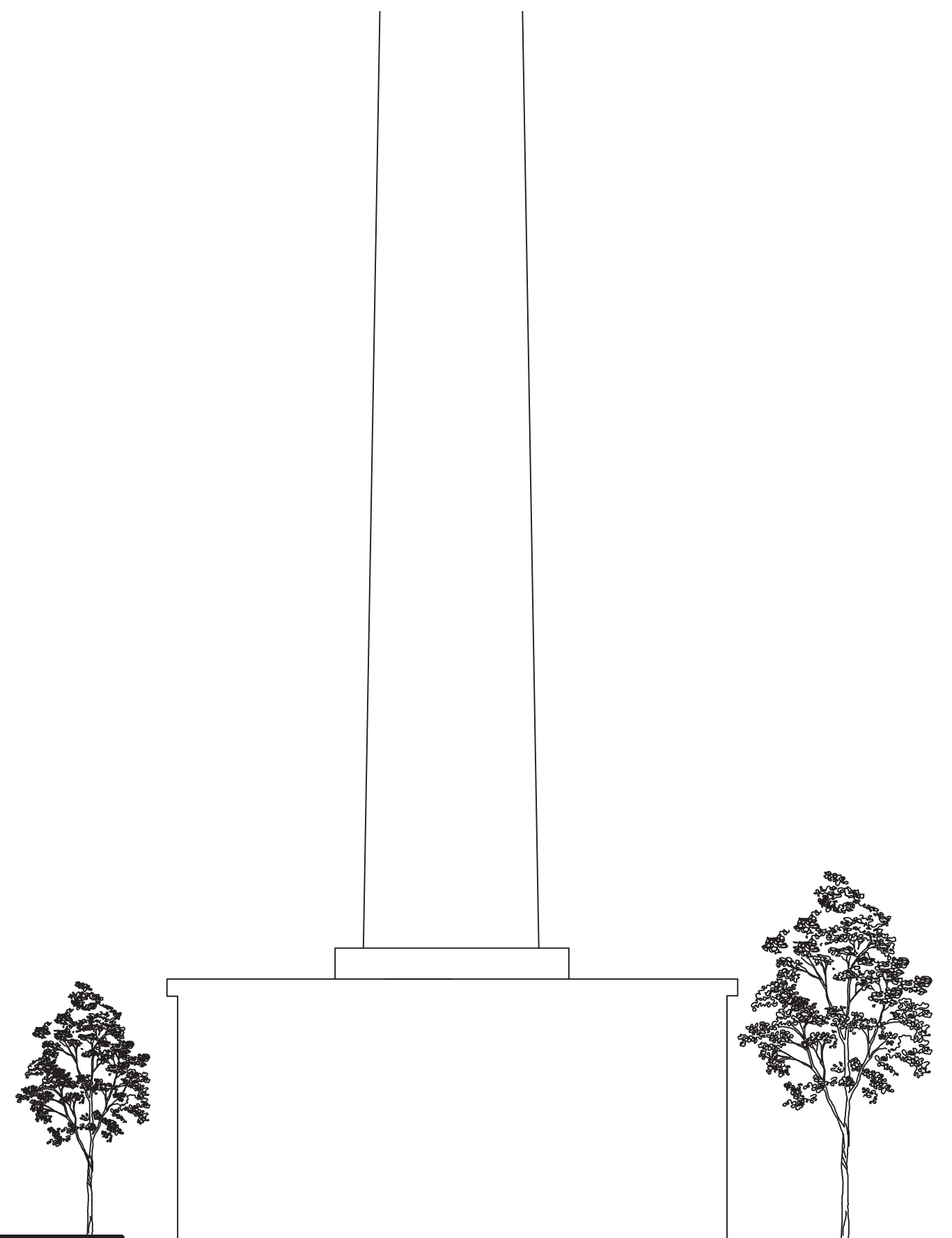
3rd Level



4th Level: Roof



Longitudinal Section: B
Scale: 1/8" = 1'-0"



Longitudinal Section C: with context
Scale: 1/16" = 1'-0"

