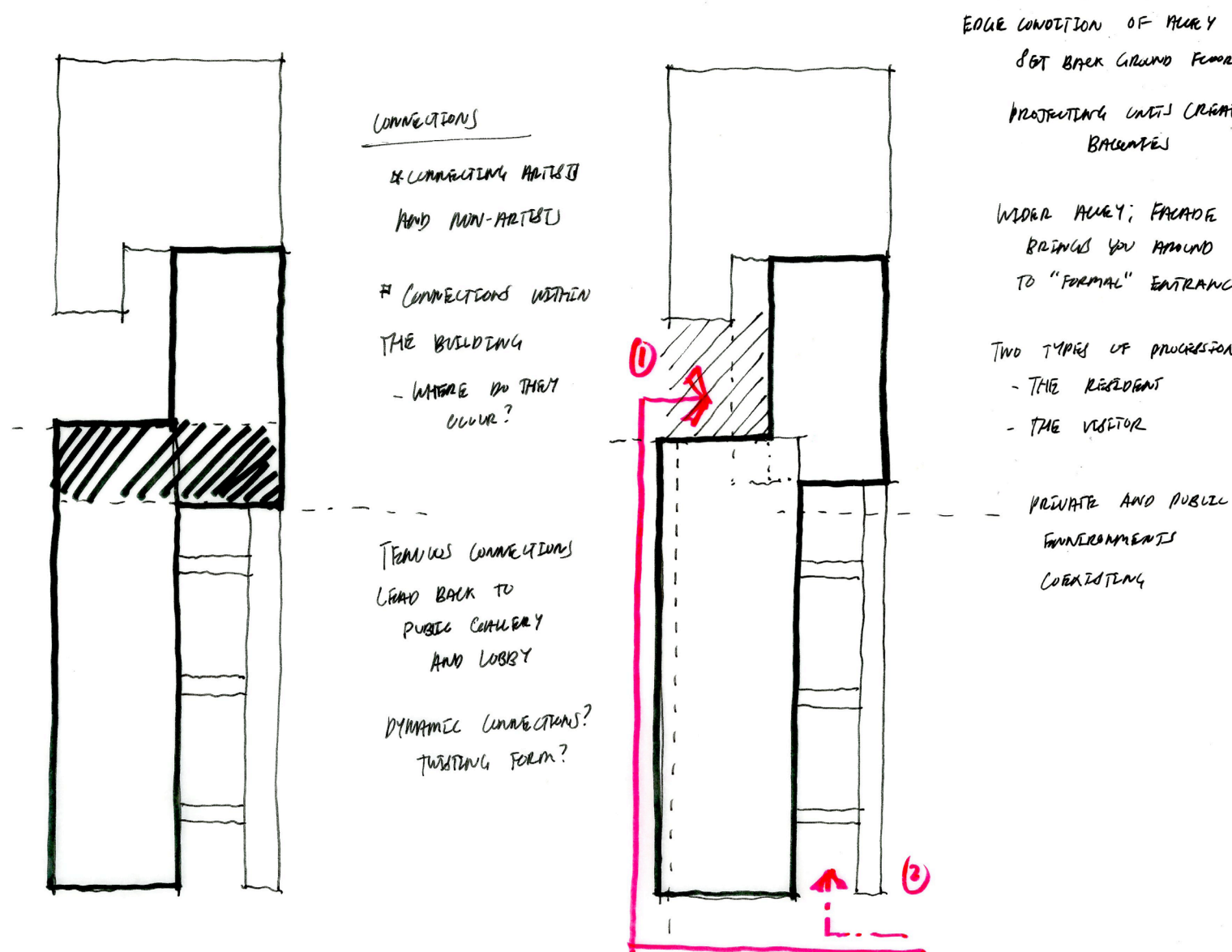
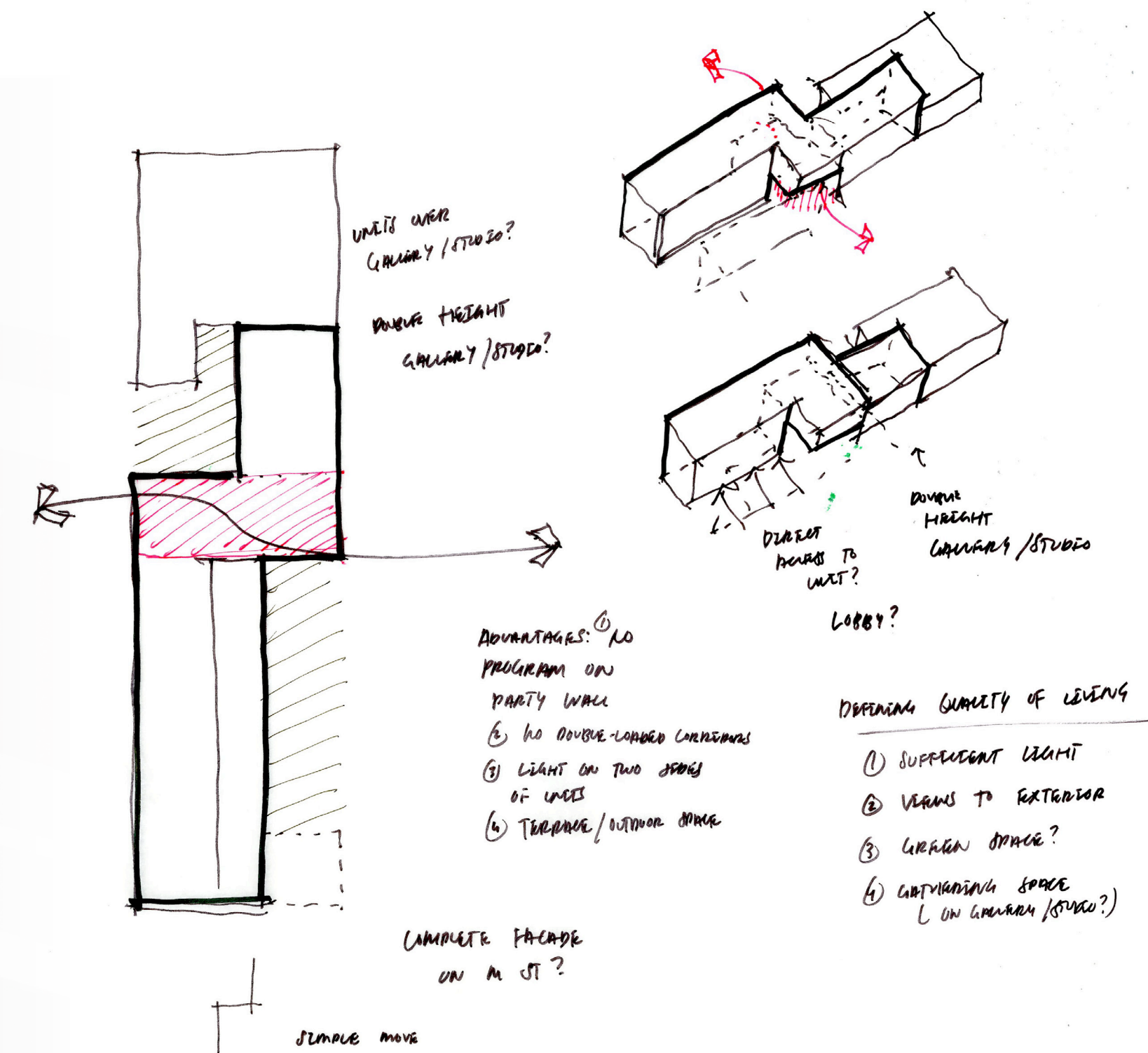
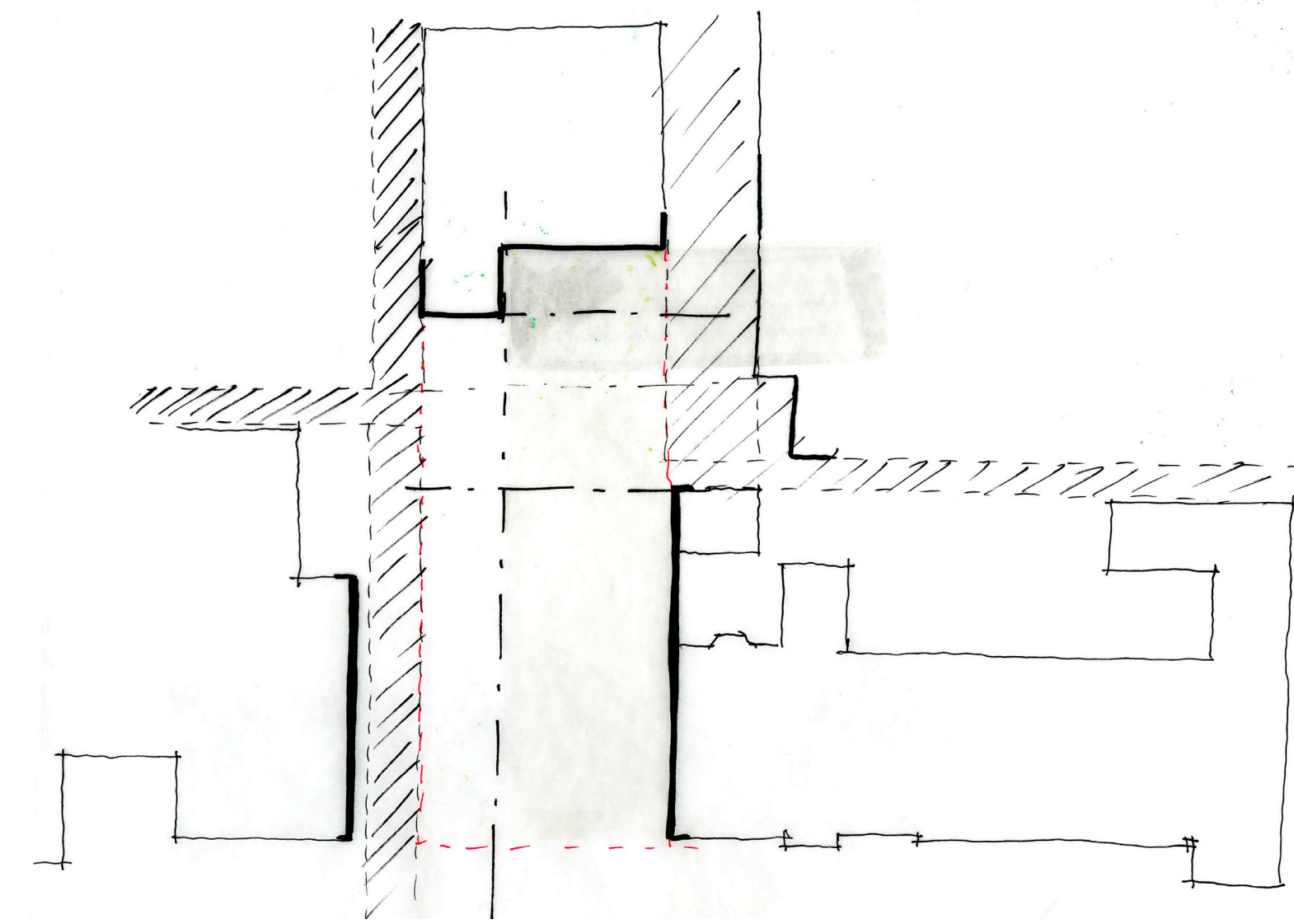
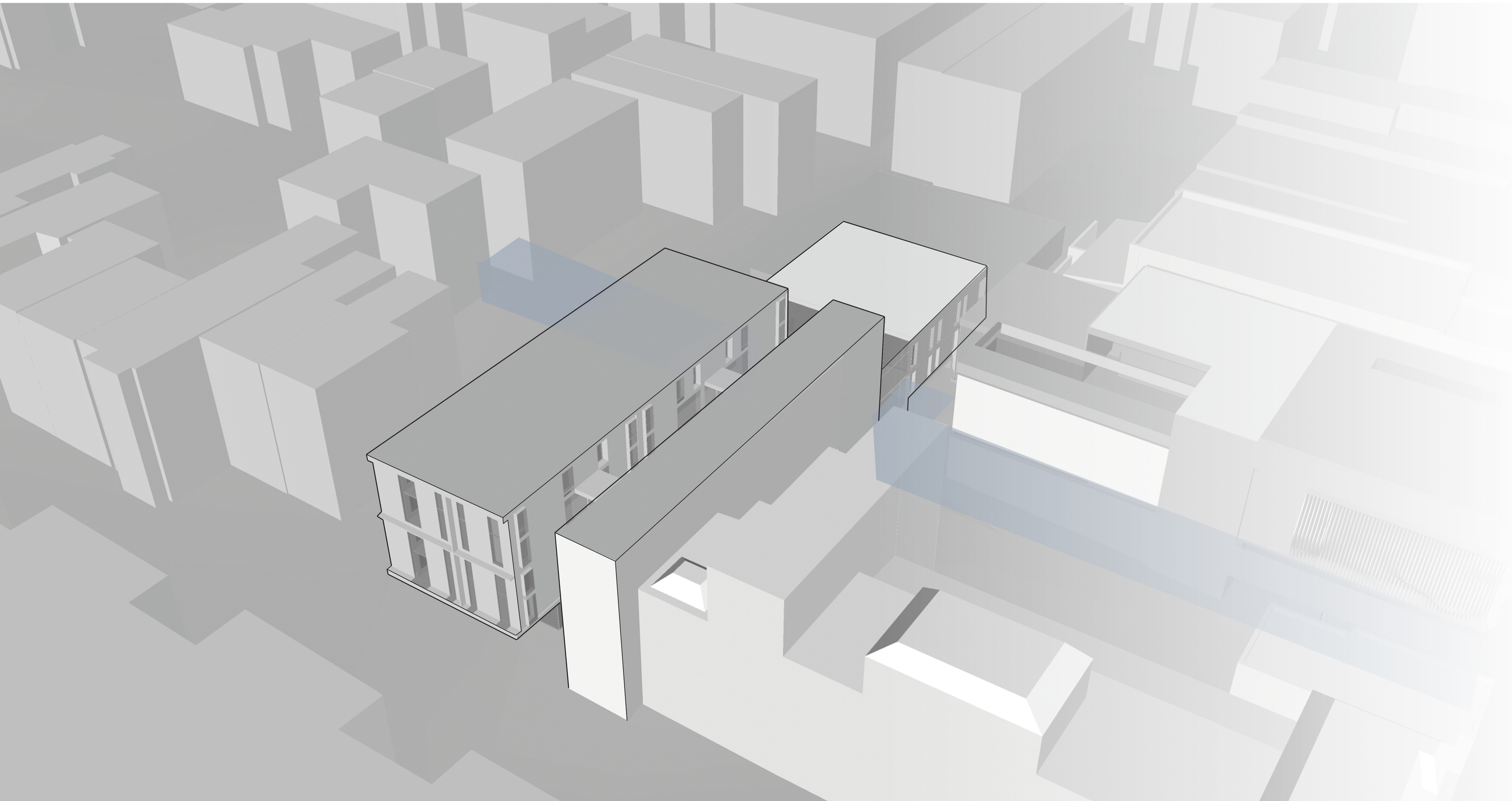
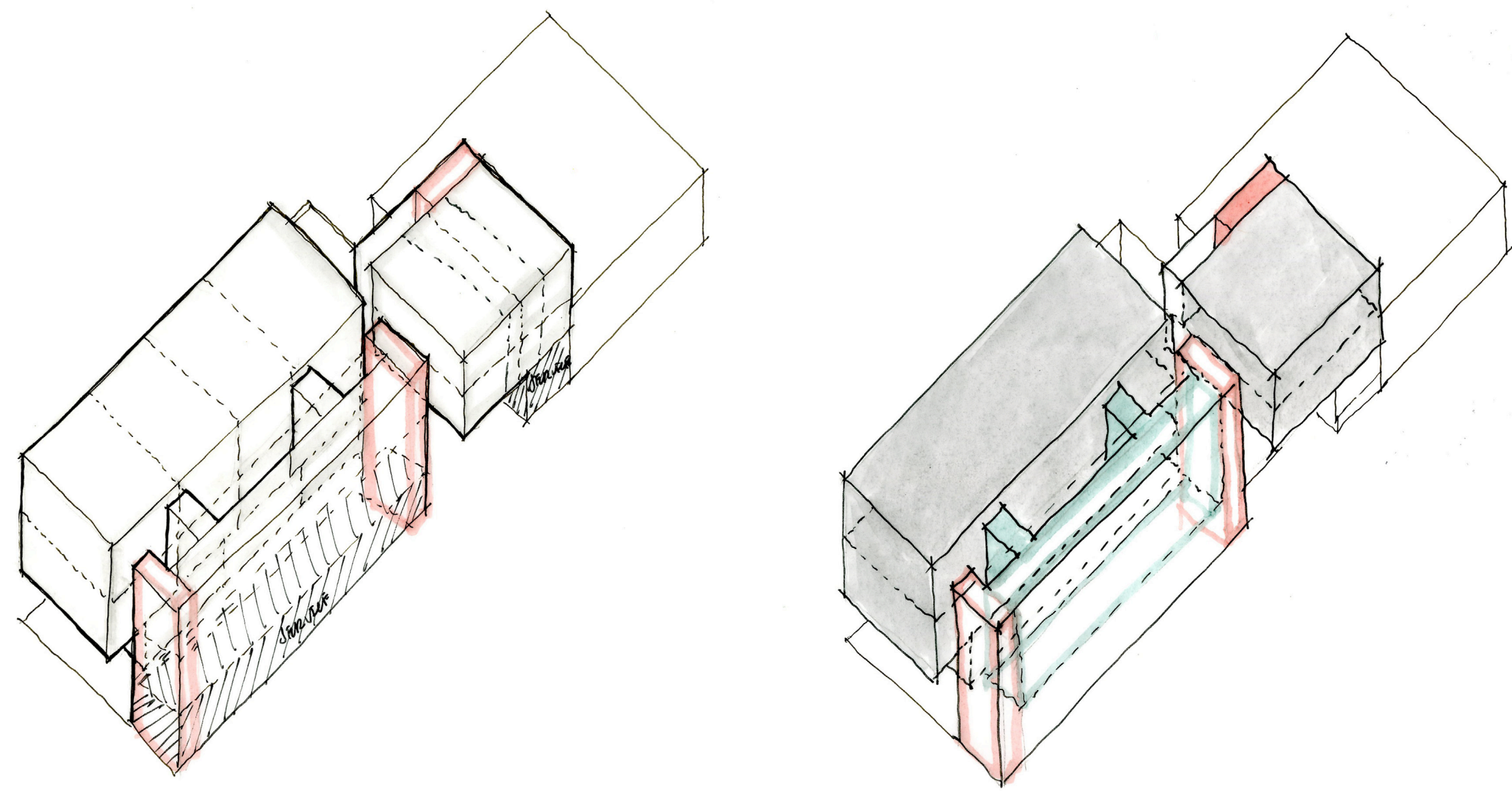


DWELLING IN BLAGDEN ALLEY

ALLEXUS FARLEY-THOMAS / ARCH402/ PROFESSOR B. WILLIAMS

DESIGN INTENT: ELEVATE THE TRANSITION FROM PUBLIC TO PRIVATE

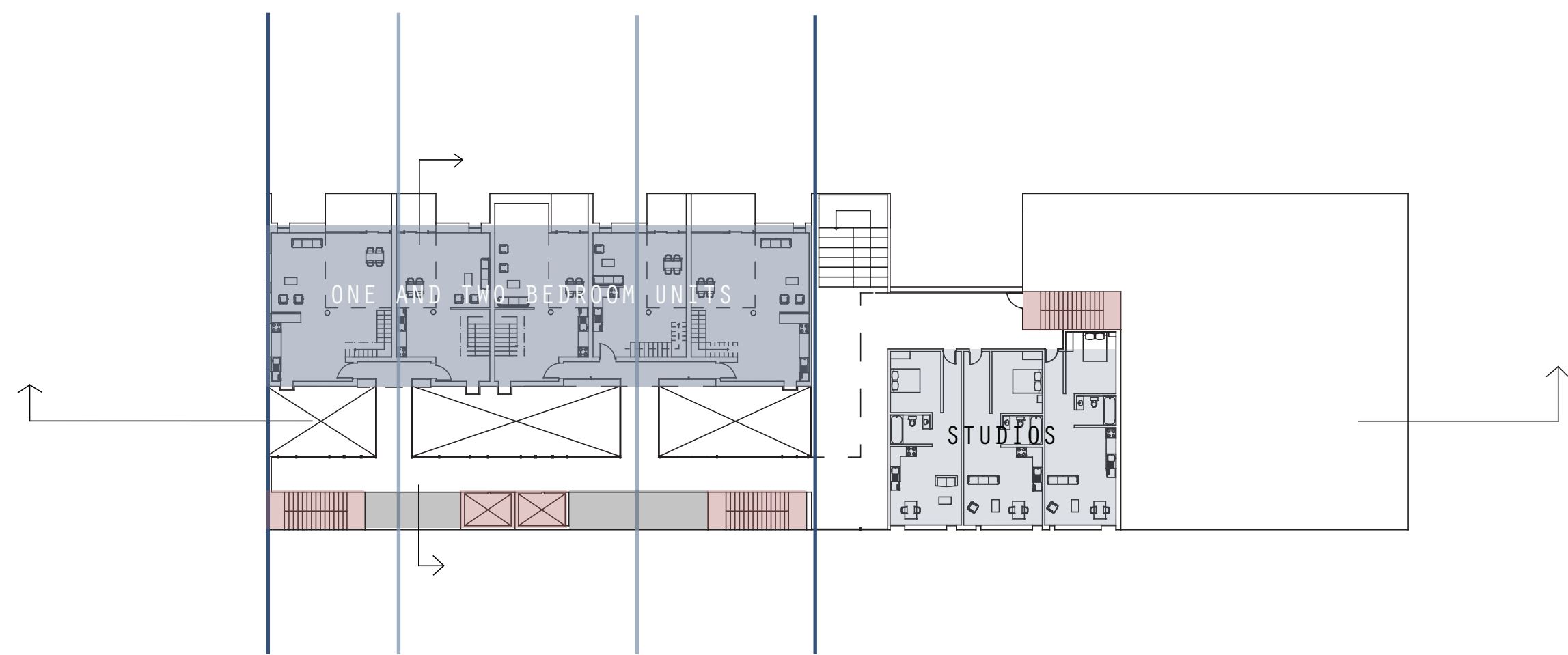
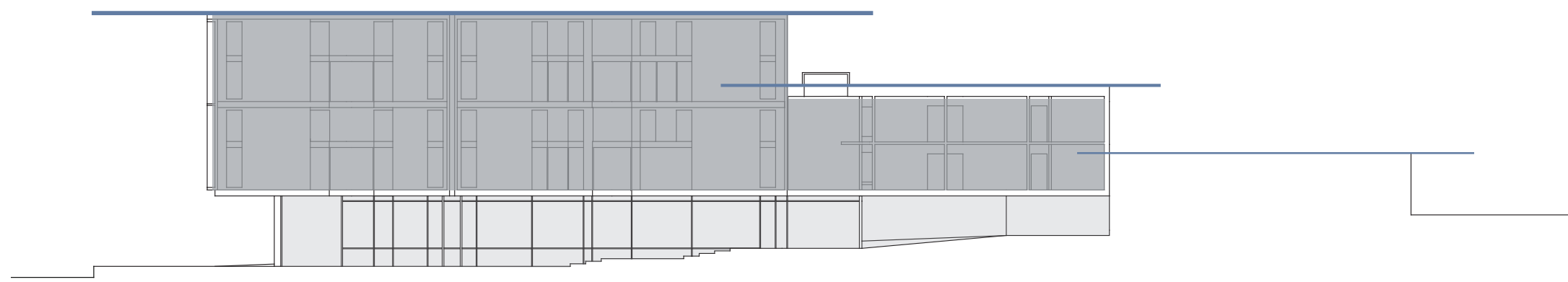




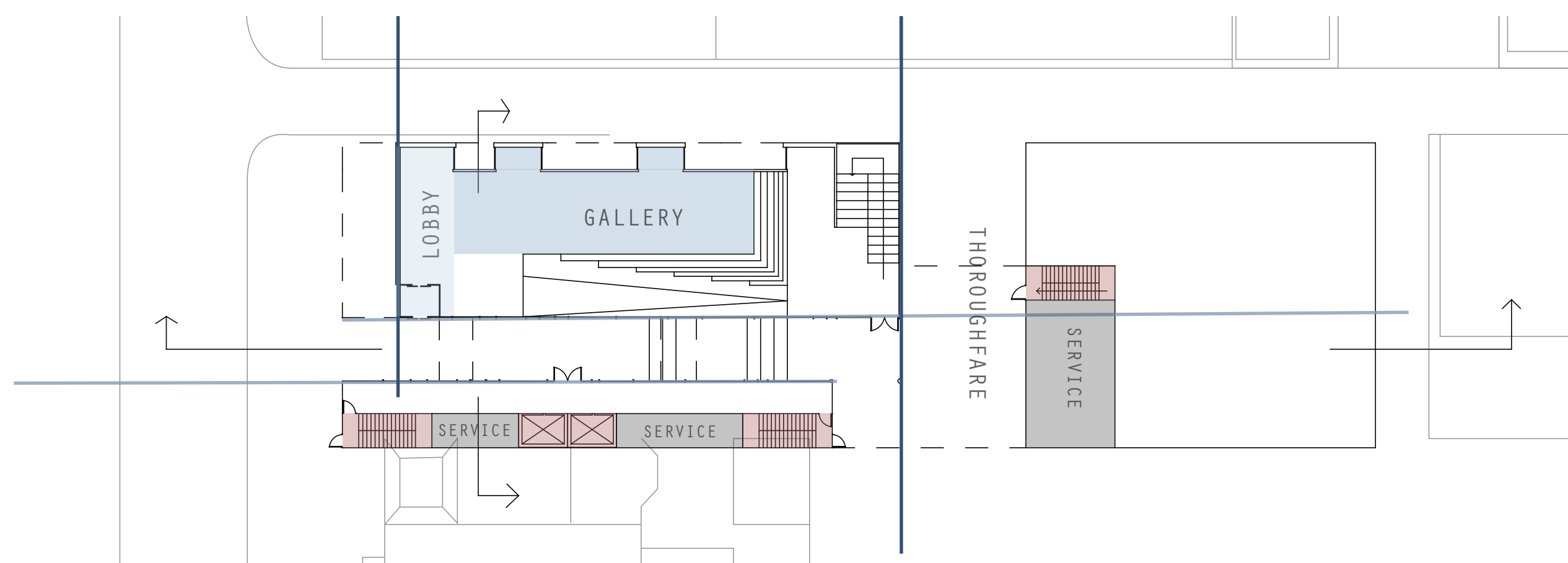
COURTYARD

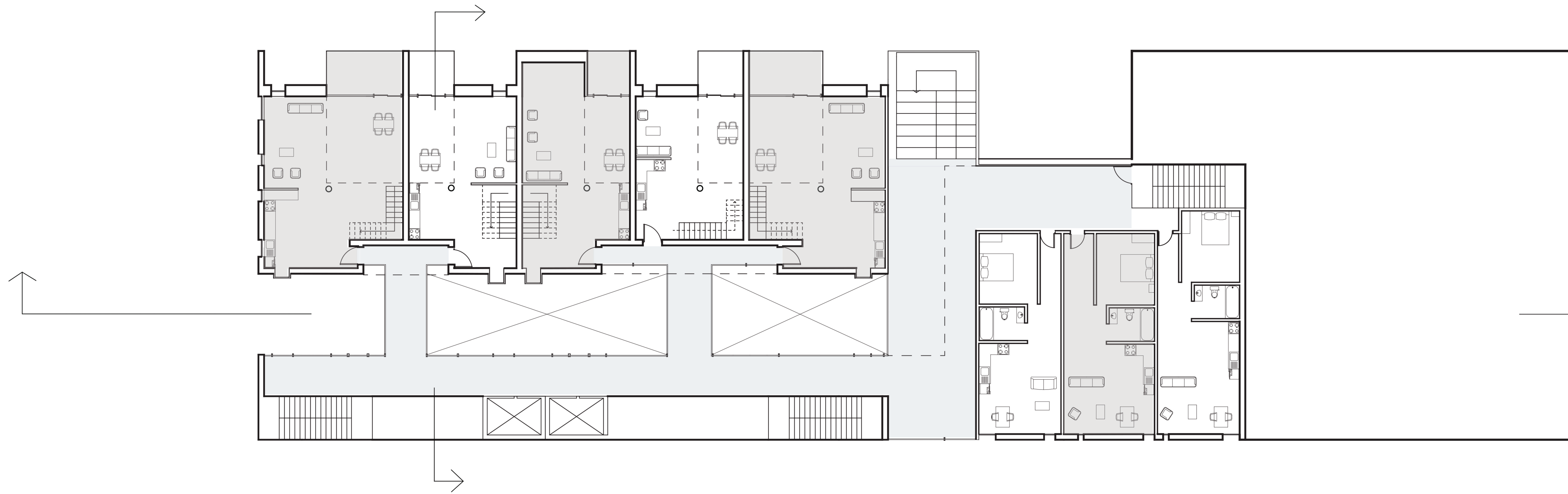


CORRIDOR



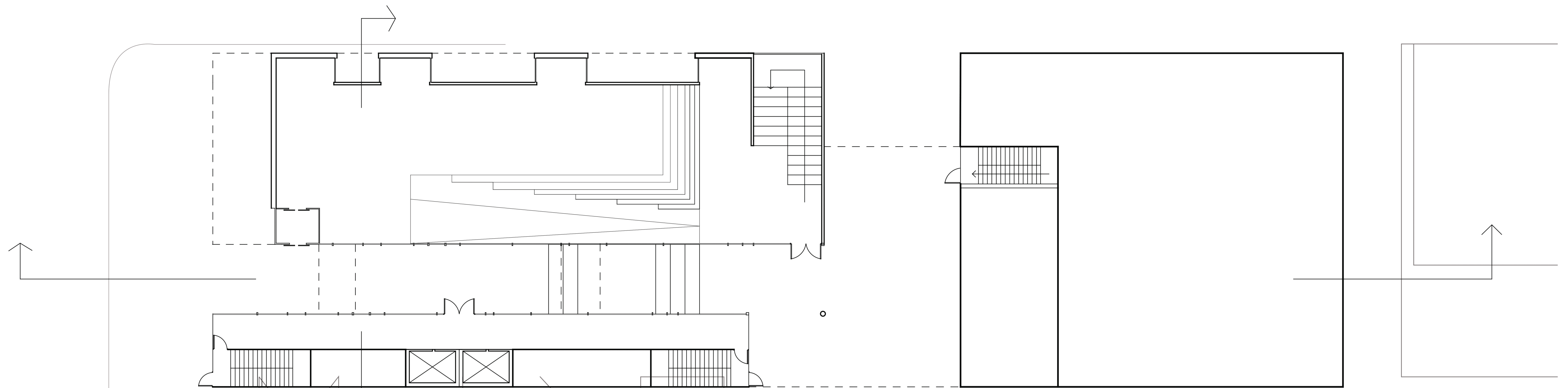
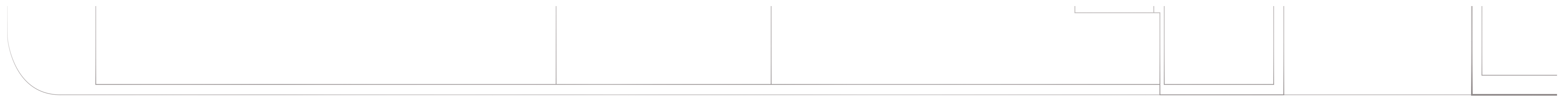
INTERIOR GALLERY





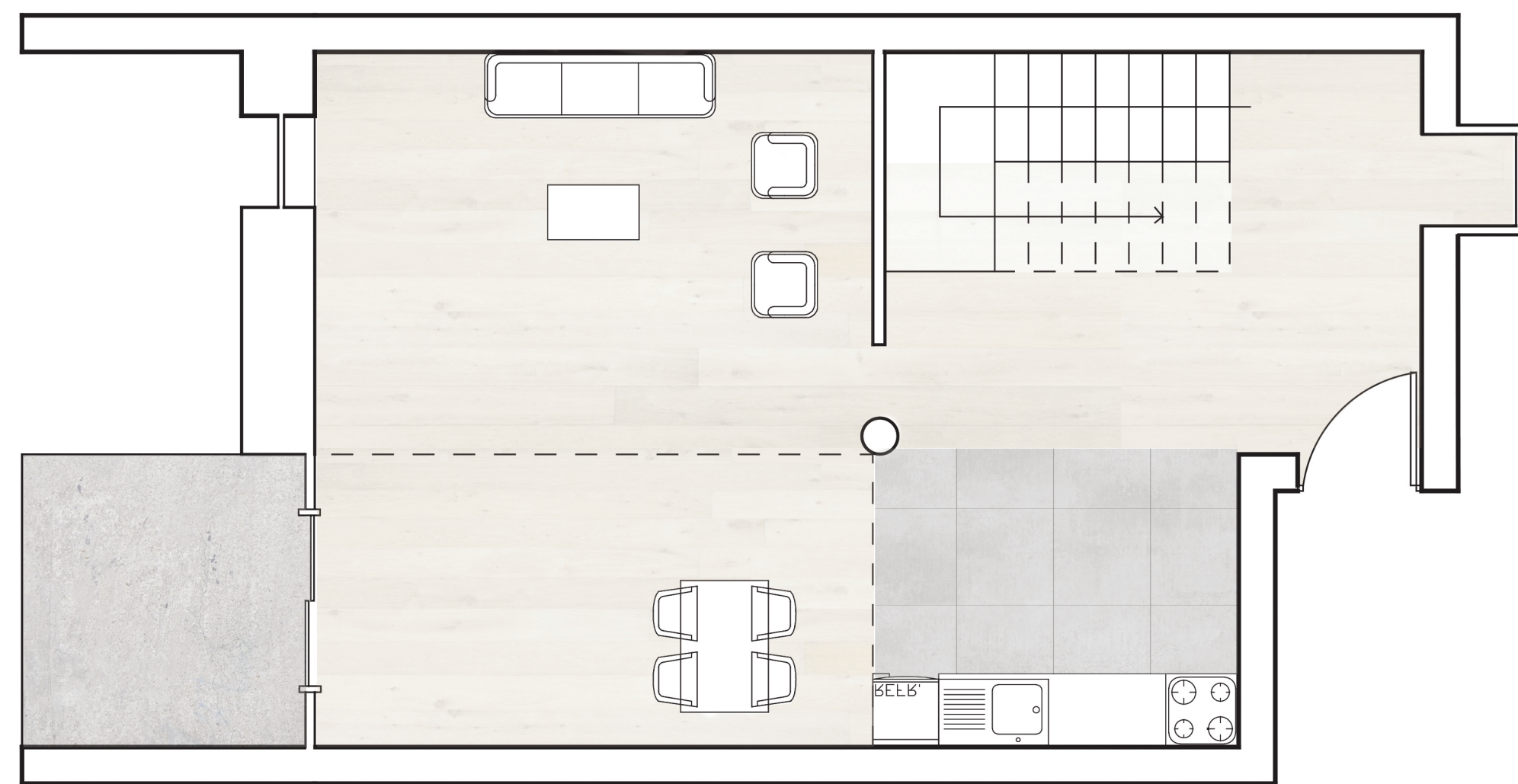
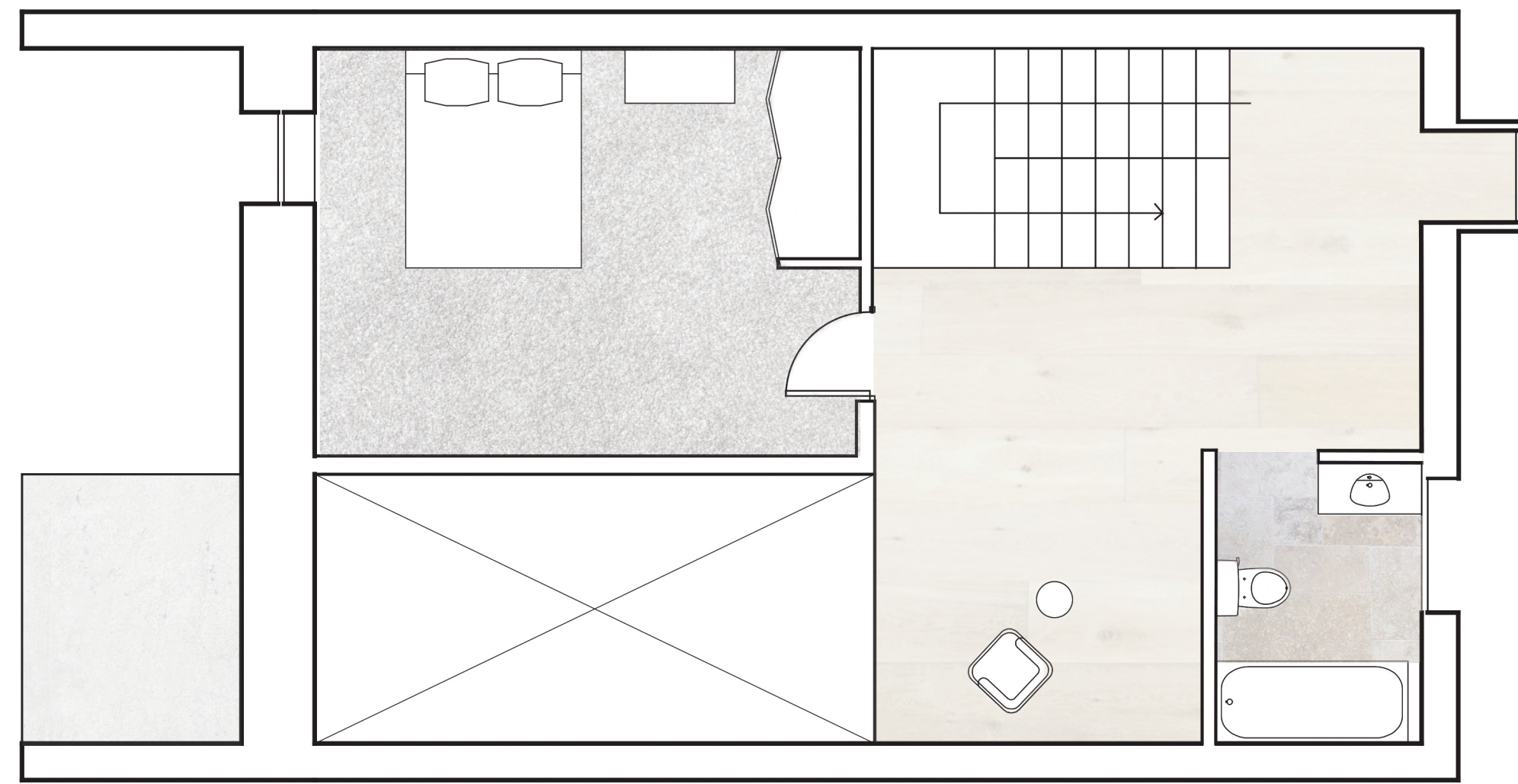
TYPICAL FLOOR PLAN

3/32"=1' - 0"

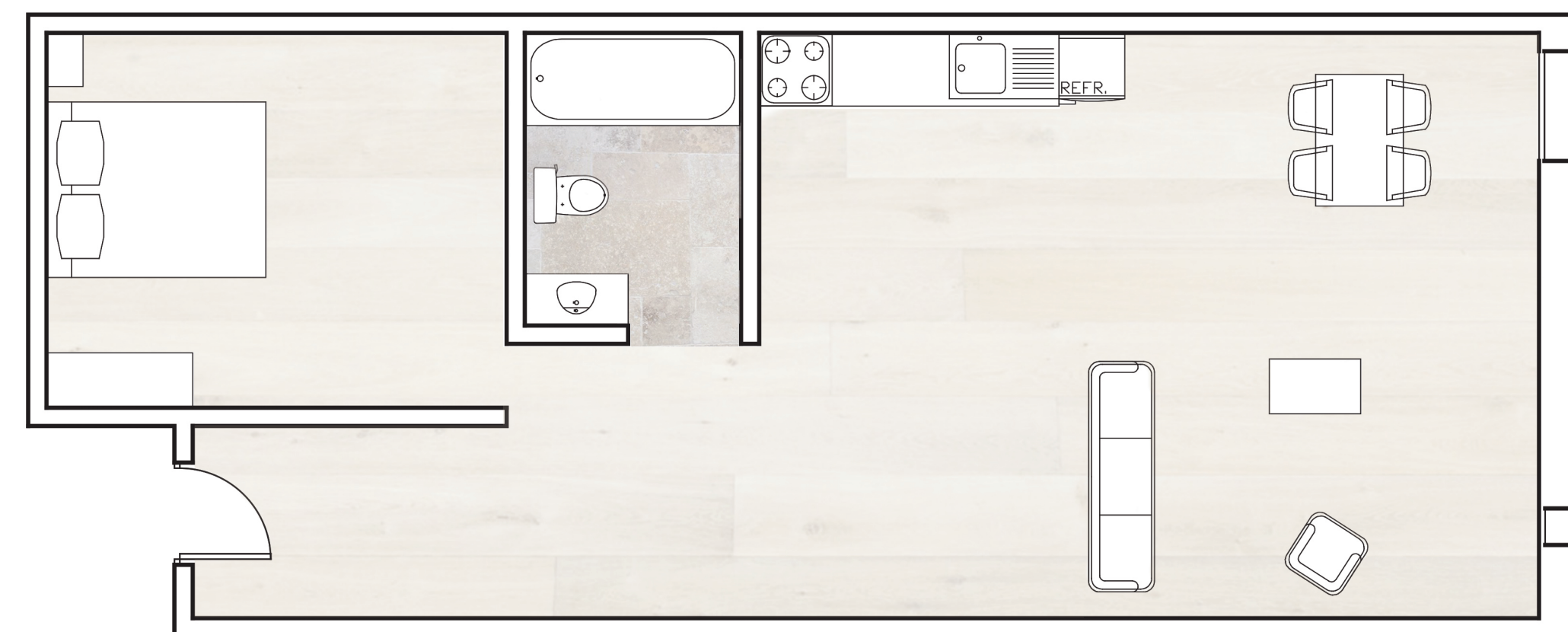


 N GROUND FLOOR PLAN

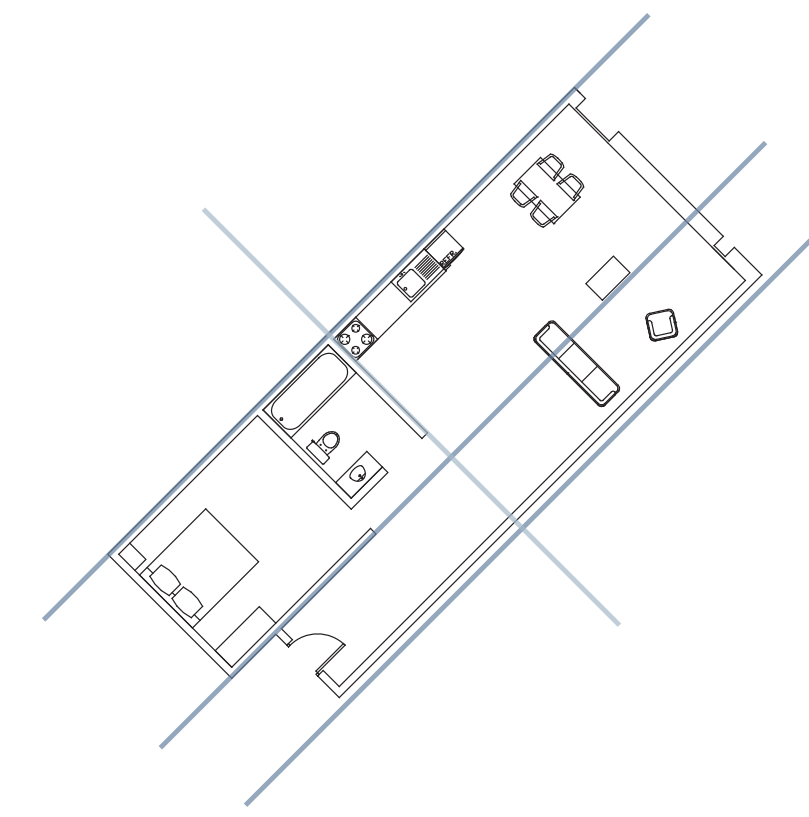
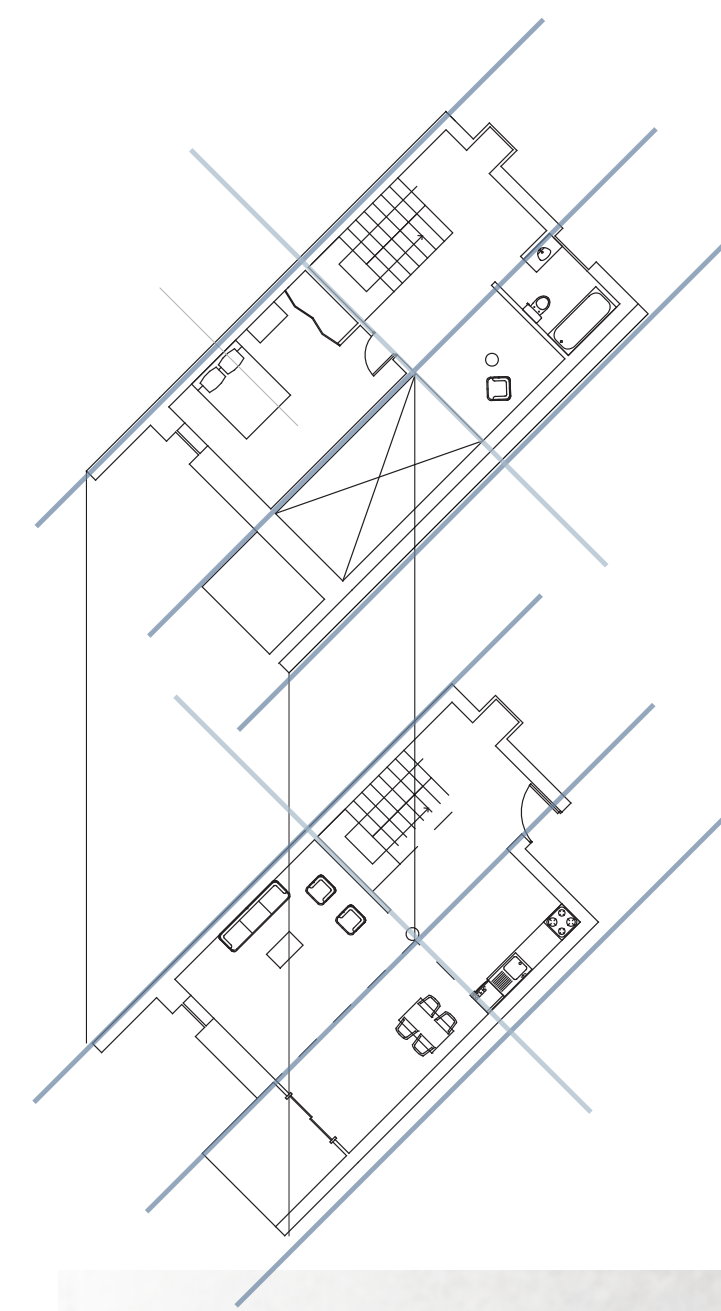
3/32"=1' - 0"



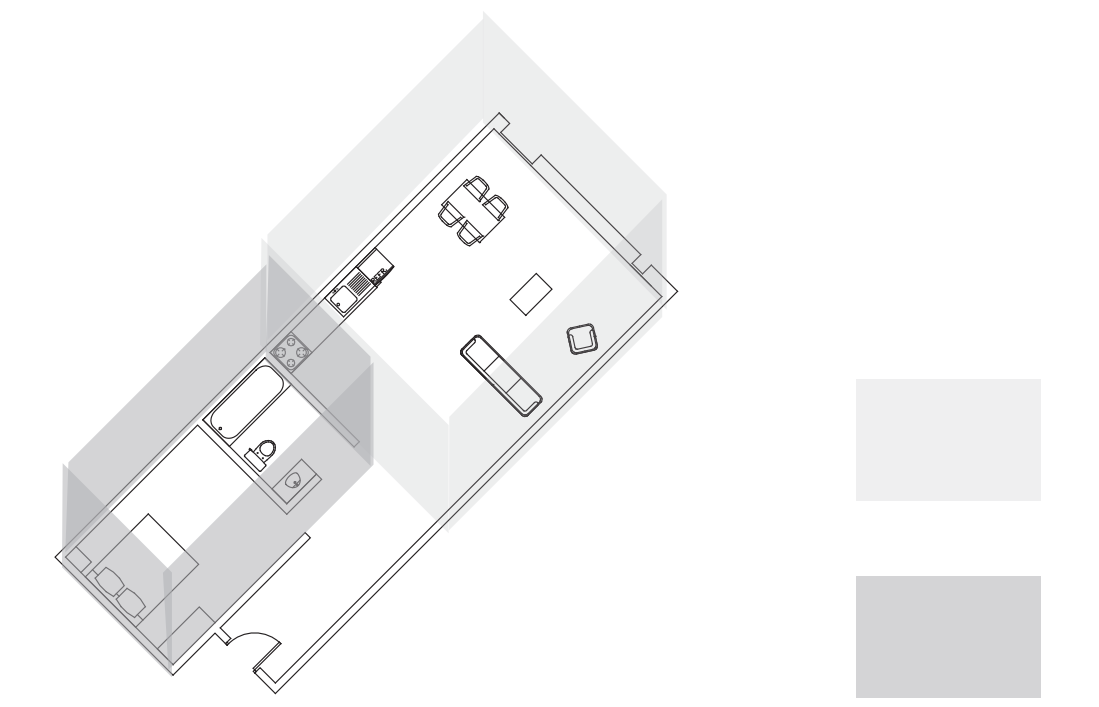
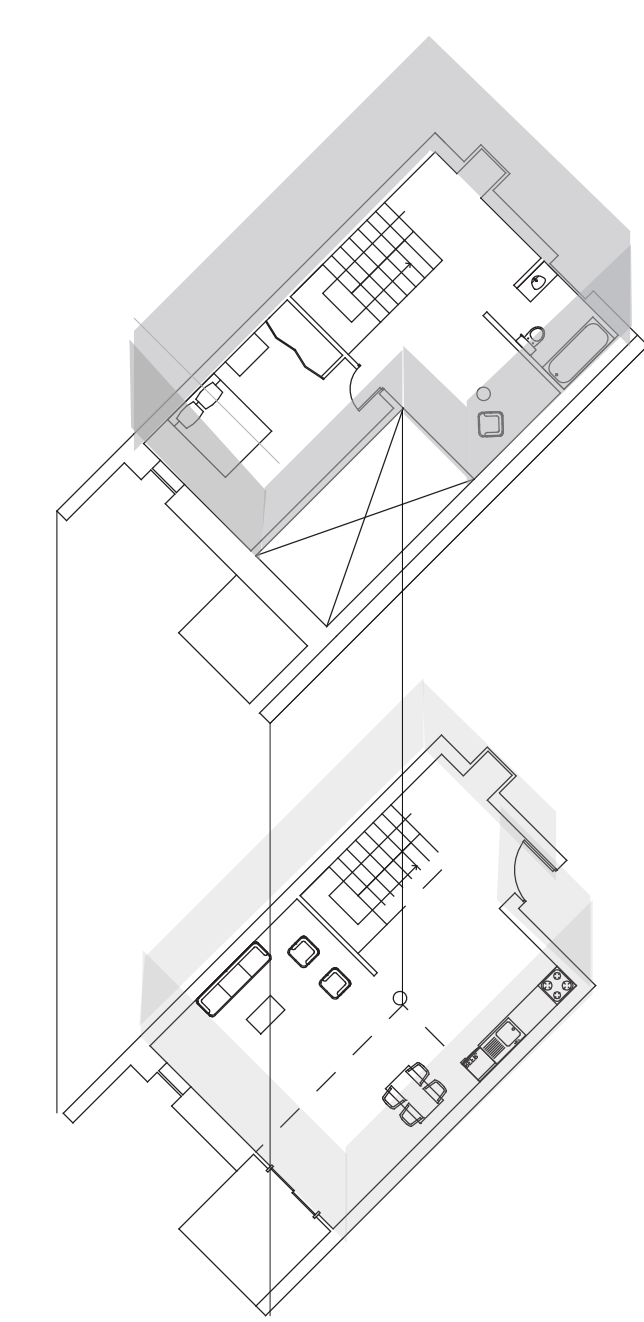
TYPICAL ONE-BEDROOM UNIT
1/4"=1'-0"



TYPICAL STUDIO UNIT
1/4"=1'-0"



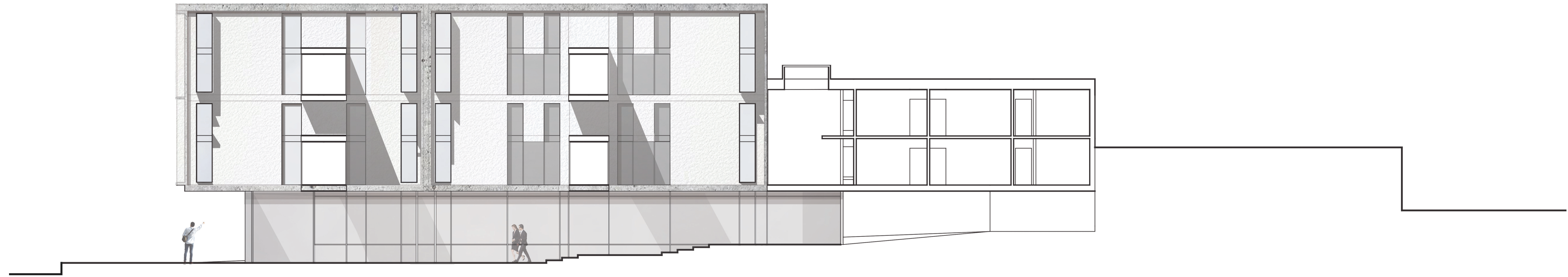
REGULATING LINES



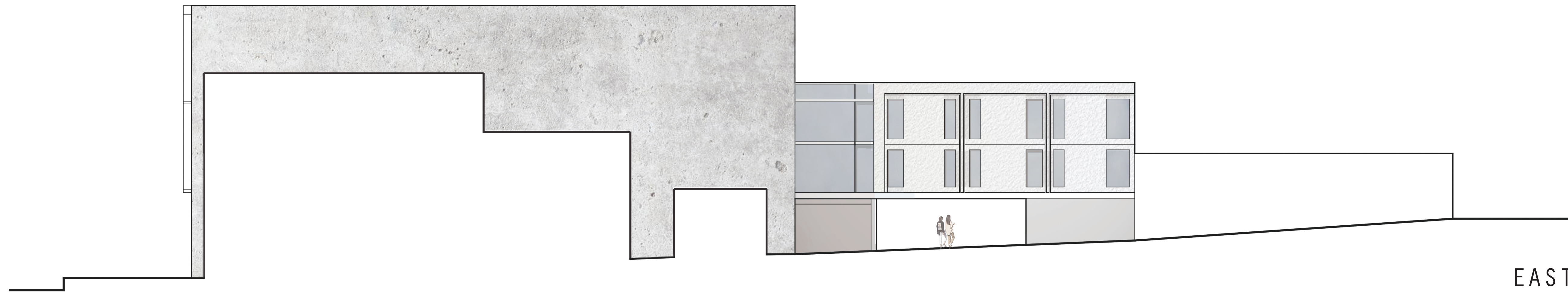
PRIVATE V. PUBLIC



TYPICAL UNIT INTERIOR



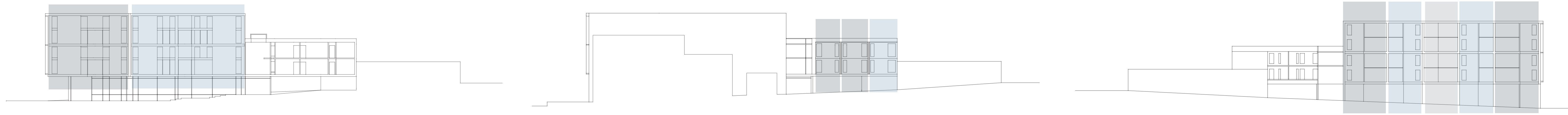
LONGITUDINAL SECTION
3/32"=1' - 0"



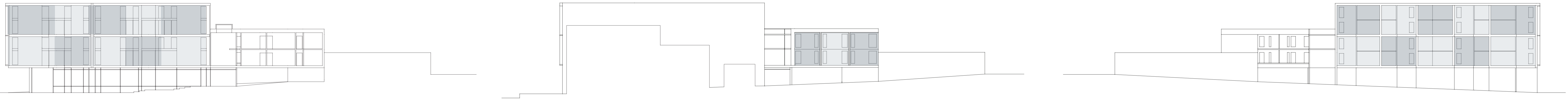
EAST ELEVATION
3/32"=1' - 0"



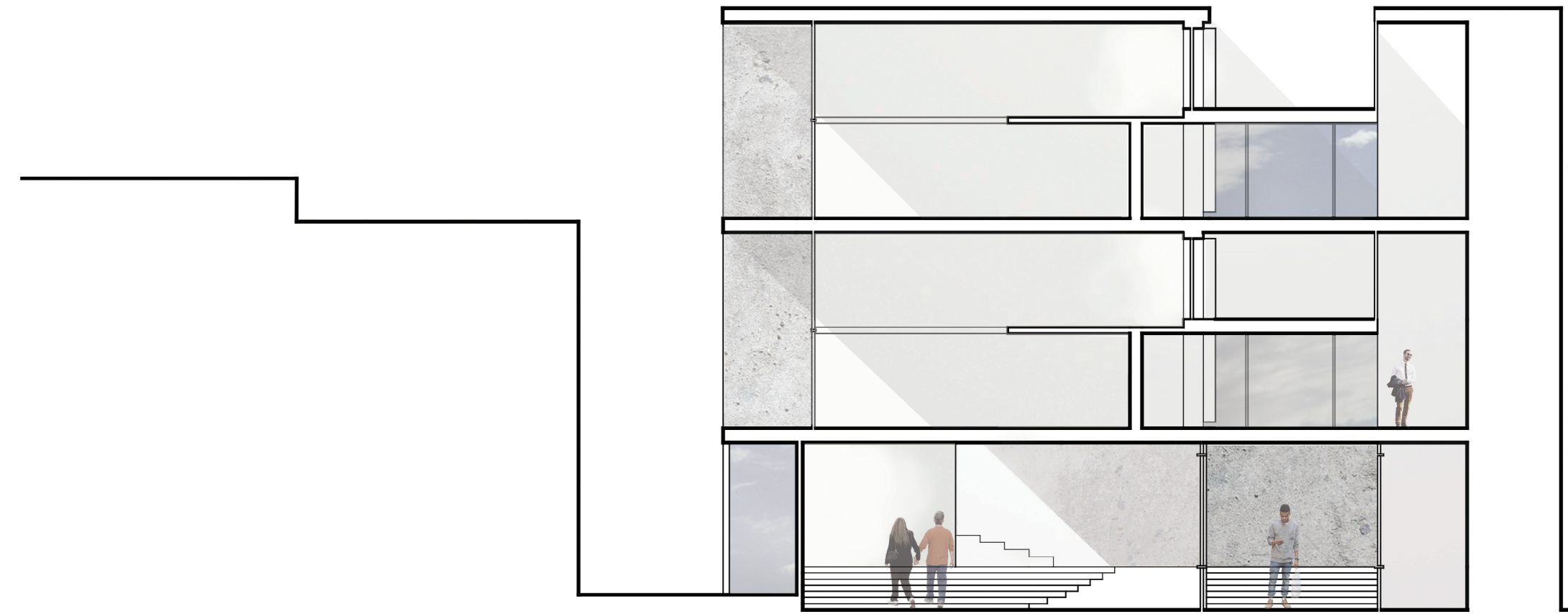
WEST ELEVATION
3/32"=1' - 0"



MODULAR RHYTHM



UNITS ON THE FACADE



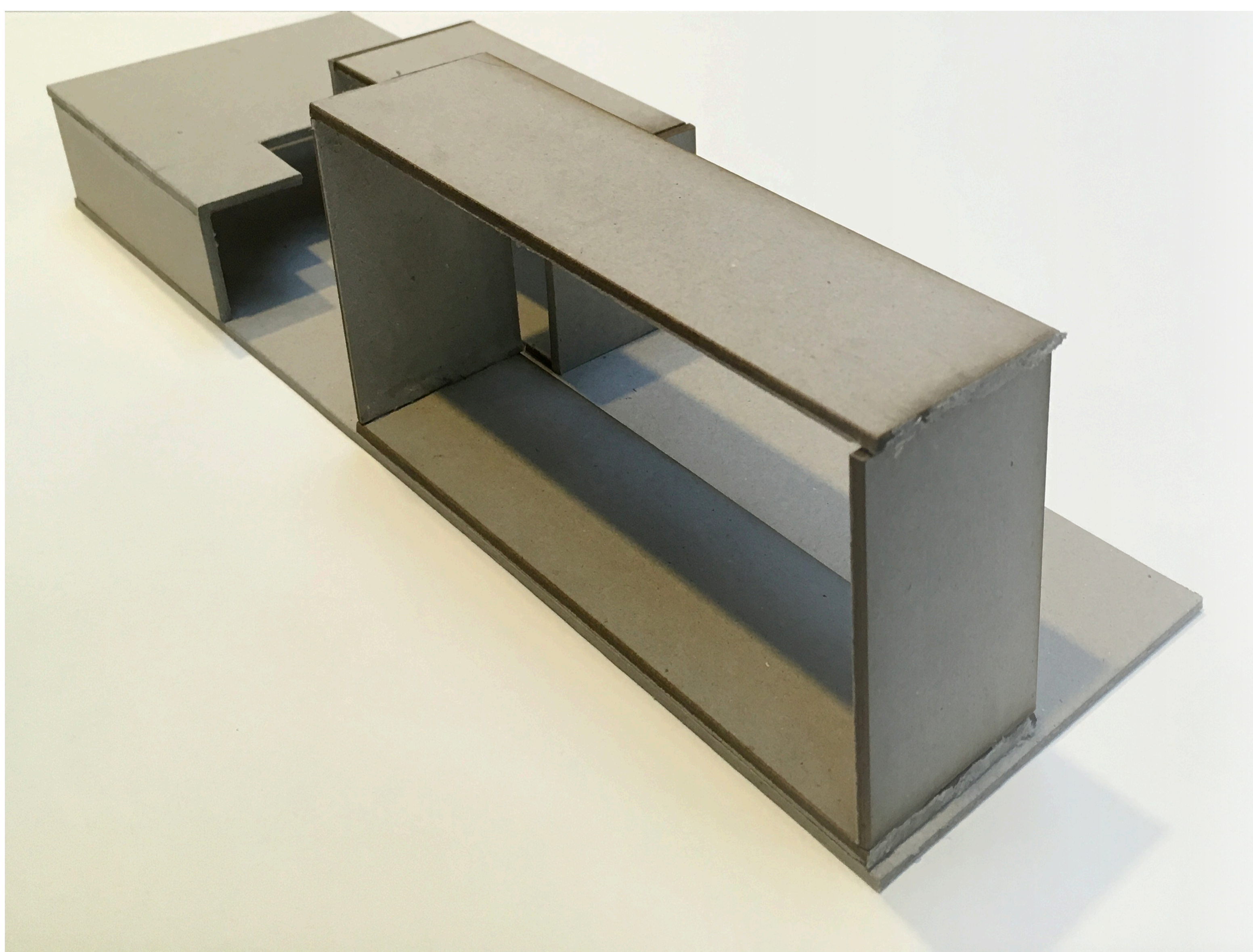
TRANSVERSE SECTION
3/32"=1' - 0"



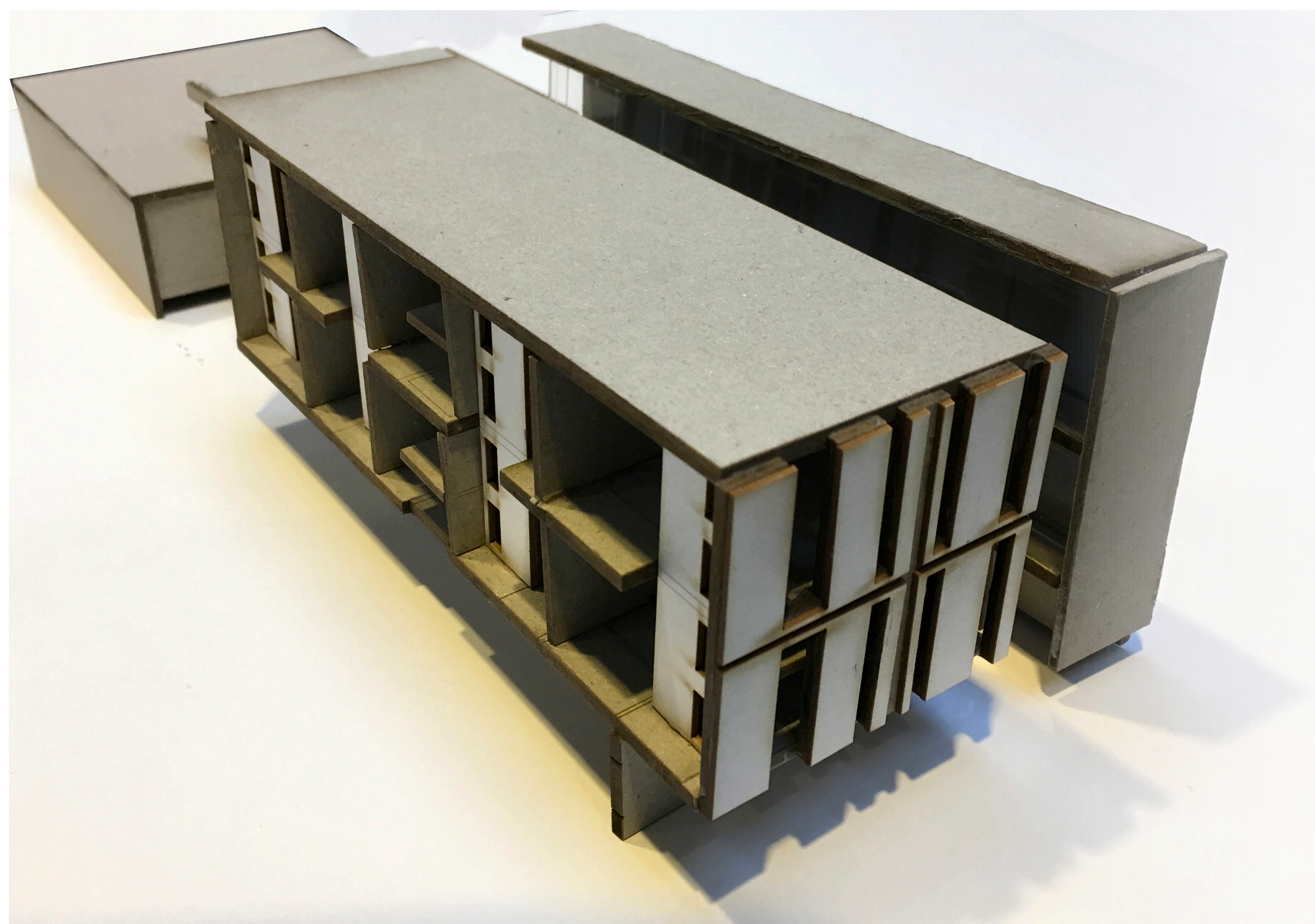
SOUTH ELEVATION
3/32"=1' - 0"



APPROACH FROM THE ALLEY



CONCEPT MODEL



FINAL MODEL