

STORM WATER MASTER PLAN

PREPARED IN COOPERATION WITH
UNIVERSITY OF MARYLAND
CLARK SCHOOL OF ENGINEERING INTERNS
RAUCH, INC.
AND THE TOWN OF FEDERALSBURG

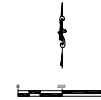
DRAWING INDEX:

SHEET 1:	TITLE SHEET
SHEET 2:	KEY SHEET
SHEET 3:	NORTH MAIN STREET
SHEET 4:	NORTH MAIN STREET
SHEET 5:	VERNON AVENUE, UNIVERSITY AVENUE NORTH
SHEET 6:	GREENRIDGE ROAD, PARK LANE
SHEET 7:	NORTH MAIN STREET, MORRIS AVENUE
SHEET 8:	UNIVERSITY AVENUE NORTH, MORRIS AVENUE, VERNON AVENUE
SHEET 9:	MORRIS AVENUE, VERNON AVENUE, EAST CENTRAL AVENUE
SHEET 10:	MORRIS AVENUE, NORTH MAIN STREET, EAST CENTRAL AVENUE
SHEET 11:	UNIVERSITY AVENUE NORTH, EAST CENTRAL AVENUE
SHEET 12:	EAST CENTRAL AVENUE, PARK LANE, MAPLE AVENUE
SHEET 13:	MAPLE AVENUE, PARK LANE, NORTH MAIN STREET
SHEET 14:	MAPLE AVENUE, UNIVERSITY AVENUE NORTH, ACADEMY AVENUE
SHEET 15:	ACADEMY AVENUE, BUENA VISTA AVENUE, HOLT STREET
SHEET 16:	ACADEMY AVENUE, PARK LANE, NORTH MAIN STREET
SHEET 17:	SOUTH UNIVERSITY AVENUE
SHEET 18:	HOLT STREET
SHEET 19:	HOLT STREET, MAIN STREET NORTH, PARK LANE, RAILROAD AVENUE
SHEET 20:	SOUTH UNIVERSITY AVENUE, RAILROAD AVENUE
SHEET 21:	BUENA VISTA AVENUE, RAILROAD AVENUE



RAUCH engineering design & development services	RAUCH, Inc. office: 410.770.9081 fax: 410.770.3667 email: design@raucheng.com web: www.raucheng.com	STORM WATER MASTER PLAN	
	110 N Washington St Easton, MD 21601	FEDERALSBURG	04/28/2014
	Fifth Election District	1"=30'	
	Caroline County, Maryland	1 OF 21	

STORM WATER MASTER PLAN
 PREPARED IN COOPERATION WITH
 UNIVERSITY OF MARYLAND
 CLARK SCHOOL OF ENGINEERING INTERNS
 RAUCH, INC.
 AND THE TOWN OF FEDERALSBURG



RAUCH, Inc.
 office: 410.770.9081
 fax: 410.770.3667
 email: design@raucheng.com
 web: www.raucheng.com
 110 N Washington St
 Easton, MD 21601

STORMWATER MASTER PLAN	
FEDERALSBURG, MARYLAND	04/28/2014
Election District	1"-200'
Sheet Name	2 OF 21



RAUCH
engineering design & development services

RAUCH, Inc.
office: 410.770.0081
fax: 410.770.3667
email: design@raucheng.com
web: www.raucheng.com
110 N Washington St
Easton, MD 21601

STORM WATER MASTER PLAN	
FEDERALSBURG	04/28/2014
Fifth Election District	1"=30'
Caroline County, Maryland	3 OF 21



RAUCH
 engineering design & development services

RAUCH, Inc.
 office: 410.770.0081
 fax: 410.770.3667
 email: design@raucheng.com
 web: www.raucheng.com
 110 N Washington St
 Easton, MD 21601

STORM WATER MASTER PLAN	
FEDERALSBURG	04/28/2014
Fifth Election District	1"=30'
Caroline County, Maryland	4 OF 21



SDI-1
STA: 1+34.65
RIM ELEV: 35.20
INV OUT: 33.45

SDI-3
STA: 0+91.11
RIM ELEV: 36.07
INV IN: 34.07
INV OUT: 33.82

SDI-2
STA: 1+75.09
RIM ELEV: 35.14
INV OUT: 32.81
INV IN: 32.97
INV IN: 33.43

SDMH-9
STA: 3+53.83
RIM ELEV: 37.53
INV UNVERIFIED

SDMH-8
STA: 4+66.75
RIM ELEV: 36.66
INV UNVERIFIED

SDI-32
STA: 1+73.92
RIM ELEV: 34.07
INV IN: 32.74
INV IN: 32.57
INV OUT: 32.15

SDI-31
STA: 2+42.24
RIM ELEV: 34.21
INV OUT: 33.21

SDI-28
STA: 7+12.90
RIM ELEV: 34.89
INV OUT: 33.22

SDI-29
STA: 7+12.29
RIM ELEV: 34.84
INV OUT: 33.26

SDMH-7
STA: 7+34.51
RIM ELEV: 37.36
INV UNVERIFIED

SDI-34
STA: 1+00.60
RIM ELEV: 33.98
INV OUT: 31.31
INV IN: 31.48

SDI-33
STA: 1+82.05
RIM ELEV: 34.15
INV OUT: 31.65
INV IN: 31.62

SDI-30
STA: 2+67.00
RIM ELEV: 34.41
INV OUT: 31.83
INV IN: 31.99
INV IN: 32.33

SDI-26
STA: 7+51.73
RIM ELEV: 34.74
INV OUT: 32.57
INV IN: 32.66
INV IN: 32.74

SDI-27
STA: 7+30.86
RIM ELEV: 34.88
INV OUT: 32.96
INV IN: 32.88
INV IN: 33.21

SDI-53
STA: 4+70.58
RIM ELEV: 34.40
INV OUT: 32.57
INV IN: 32.57
INV IN: 32.98

SDMH-5
STA: 8+21.16
RIM ELEV: 34.34
INV UNVERIFIED

SDMH-6
STA: 8+20.45
RIM ELEV: 34.07
INV UNVERIFIED

RAUCH
engineering design & development services

RAUCH, Inc.
office: 410.770.0081
fax: 410.770.3667
email: design@raucheng.com
web: www.raucheng.com
110 N Washington St
Easton, MD 21601

STORM WATER MASTER PLAN	
FEDERALSBURG	04/28/2014
Fifth Election District	1"-30'
Caroline County, Maryland	5 OF 21



RAUCH engineering design & development services	RAUCH, Inc. office: 410.770.0081 fax: 410.770.3667 email: design@raucheng.com web: www.raucheng.com 110 N Washington St Easton, MD 21601	STORM WATER MASTER PLAN	
		FEDERALSBURG Fifth Election District Caroline County, Maryland	04/28/2014 1"=30' 6 OF 21



RAUCH engineering design & development services	RAUCH, Inc. office: 410.770.0081 fax: 410.770.3667 email: design@raucheng.com web: www.raucheng.com 110 N Washington St Easton, MD 21601	STORM WATER MASTER PLAN	
		FEDERALSBURG Fifth Election District Caroline County, Maryland	04/28/2014 1"=30' 7 OF 21



RAUCH engineering design & development services	RAUCH, Inc. office: 410.770.0081 fax: 410.770.3667 email: design@raucheng.com web: www.raucheng.com 110 N Washington St Easton, MD 21601	STORM WATER MASTER PLAN	
		FEDERALSBURG Fifth Election District Caroline County, Maryland	04/28/2014 1"=30' 8 OF 21



RAUCH engineering design & development services	RAUCH, Inc. office: 410.770.0081 fax: 410.770.3667 email: design@raucheng.com web: www.raucheng.com	STORM WATER MASTER PLAN	
	110 N Washington St Easton, MD 21601	FEDERALSBURG Fifth Election District Caroline County, Maryland	04/28/2014 1"=30' 9 OF 21



<p>RAUCH engineering design & development services</p>	<p>RAUCH, Inc. office: 410.770.0081 fax: 410.770.3667 email: design@raucheng.com web: www.raucheng.com 110 N Washington St Easton, MD 21601</p>	<p>STORM WATER MASTER PLAN</p>	
	<p>FEDERALSBURG Fifth Election District Caroline County, Maryland</p>	<p>04/28/2014 1"=30' 10 OF 21</p>	



RAUCH
 engineering design & development services

RAUCH, Inc.
 office: 410.770.9081
 fax: 410.770.3667
 email: design@raucheng.com
 web: www.raucheng.com
 110 N Washington St
 Easton, MD 21601

STORM WATER MASTER PLAN		
FEDERALSBURG		04/28/2014
Fifth Election District		1"=30'
Caroline County, Maryland		11 OF 21



RAUCH <small>engineering design & development services</small>	<small>RAUCH, Inc. office: 410.770.0081 fax: 410.770.3667 email: design@raucheng.com web: www.raucheng.com 110 N Washington St Easton, MD 21601</small>	STORM WATER MASTER PLAN	
		<small>FEDERALSBURG Fifth Election District Caroline County, Maryland</small>	<small>04/28/2014 1"-30" 12 OF 21</small>



RAUCH engineering design & development services	RAUCH, Inc. office: 410.770.0081 fax: 410.770.3667 email: design@raucheng.com web: www.raucheng.com 110 N Washington St Easton, MD 21601	STORM WATER MASTER PLAN	
		FEDERALSBURG Fifth Election District Caroline County, Maryland	04/28/2014 1"=30' 13 OF 21



SDI-90
 STA: 3+75.82
 RIM ELEV: 34.57
 INV IN: 32.07

SDI-91
 STA: 3+76.48
 RIM ELEV: 34.14
 INV IN: 31.89
 INV OUT: 31.31

SDI-108
 STA: 7+61.13
 RIM ELEV: 35.53
 INV IN: 31.95

SDI-109
 STA: 7+85.15
 RIM ELEV: 35.57
 INV IN: 32.57

SDI-110
 STA: 4+91.23
 RIM ELEV: 32.12
 INV IN: 29.29

SDI-111
 STA: 4+90.84
 RIM ELEV: 32.63
 INV IN: 29.13

SDMH-34
 STA: 4+90.41
 RIM ELEV: 32.58
 INV IN: UNVERIFIED

SDI-112
 STA: 6+71.54
 RIM ELEV: 33.41
 INV IN: UNVERIFIED

RAUCH
 engineering design & development services

RAUCH, Inc.
 office: 410.770.9081
 fax: 410.770.3667
 email: design@raucheng.com
 web: www.raucheng.com
 110 N Washington St
 Easton, MD 21601

STORM WATER MASTER PLAN	
FEDERALSBURG	04/28/2014
Fifth Election District	1"=30'
Caroline County, Maryland	14 OF 21



SDMH-35
STA: 9+34.26
RIM ELEV: 25.32
INV IN: UNVERIFIED

SDI-113
STA: 9+33.95
RIM ELEV: 25.04
INV IN: UNVERIFIED

SDI-114
STA: 9+33.02
RIM ELEV: 25.27
INV IN: 22.44

SDI-115
STA: 7+94.32
RIM ELEV: 23.57
INV IN: UNVERIFIED

SDMH-36
STA: 10+56.93
RIM ELEV: 20.74
INV IN: UNVERIFIED

SDI-116
STA: 12+87.74
RIM ELEV: 12.14
INV IN: 9.81

SDMH-37
STA: 12+87.24
RIM ELEV: 12.25
INV IN: UNVERIFIED

SDI-151
STA: 2+13.27
RIM ELEV: 9.74
INV IN: 8.16

SDI-149
STA: 3+13.65
RIM ELEV: 9.34
INV IN: 8.09

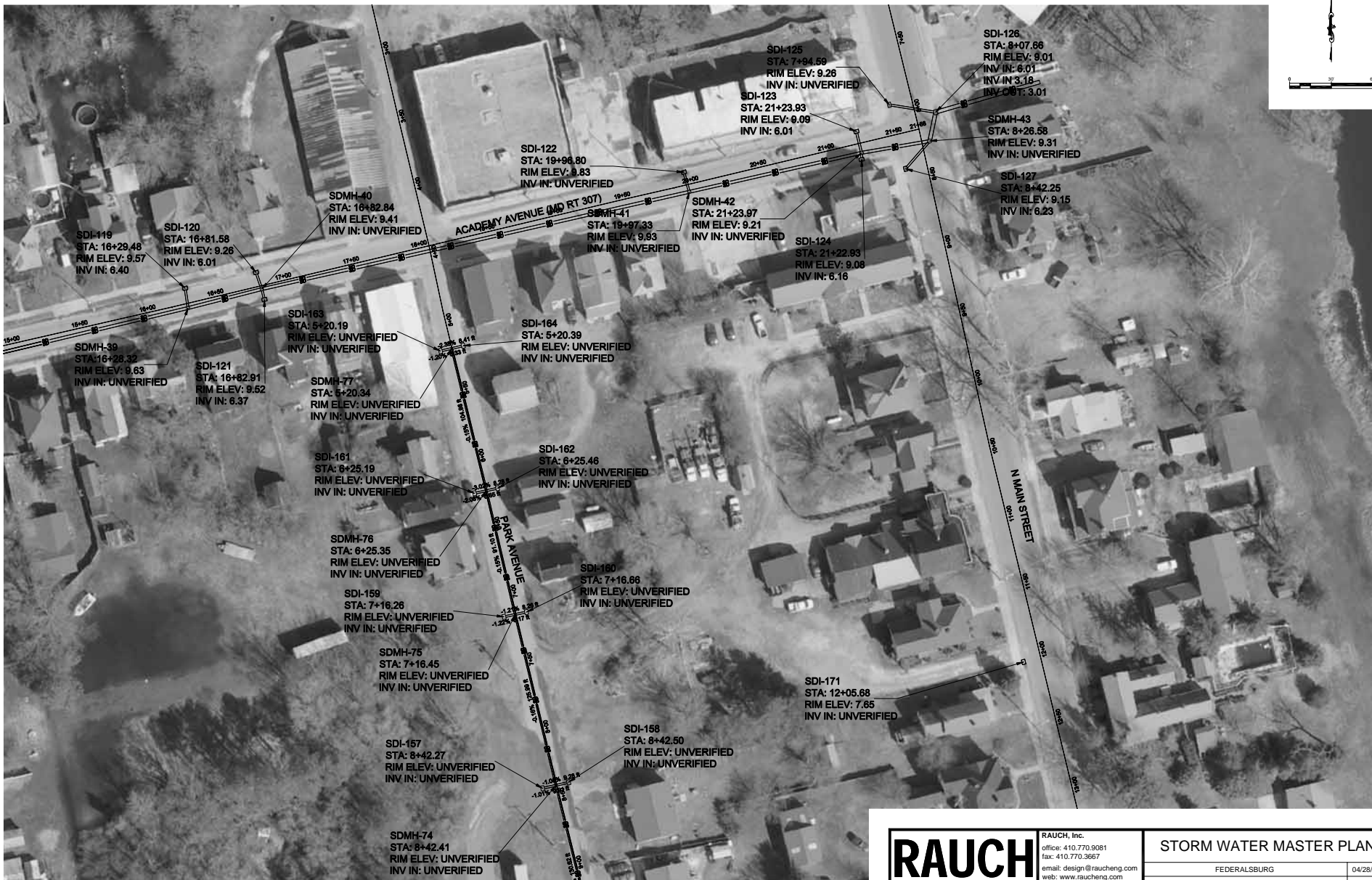
SDMH-38
STA: 14+54.45
RIM ELEV: 10.05
INV IN: UNVERIFIED

SDI-117
STA: 12+88.27
RIM ELEV: 12.06
INV IN: 9.14

SDI-118
STA: 14+55.87
RIM ELEV: 7.18
INV IN: 7.18

SDI-150
STA: 3+13.62
RIM ELEV: 9.41
INV IN: 8.08

RAUCH engineering design & development services	RAUCH, Inc. office: 410.770.0081 fax: 410.770.3667 email: design@raucheng.com web: www.raucheng.com 110 N Washington St Easton, MD 21601	STORM WATER MASTER PLAN	
		FEDERALSBURG Fifth Election District Caroline County, Maryland	04/28/2014 1"-30" 15 OF 21



RAUCH, Inc.
 office: 410.770.0081
 fax: 410.770.3667
 email: design@raucheng.com
 web: www.raucheng.com
 110 N Washington St
 Easton, MD 21601

STORM WATER MASTER PLAN	
FEDERALSBURG	04/28/2014
Fifth Election District	1"=30'
Caroline County, Maryland	16 OF 21



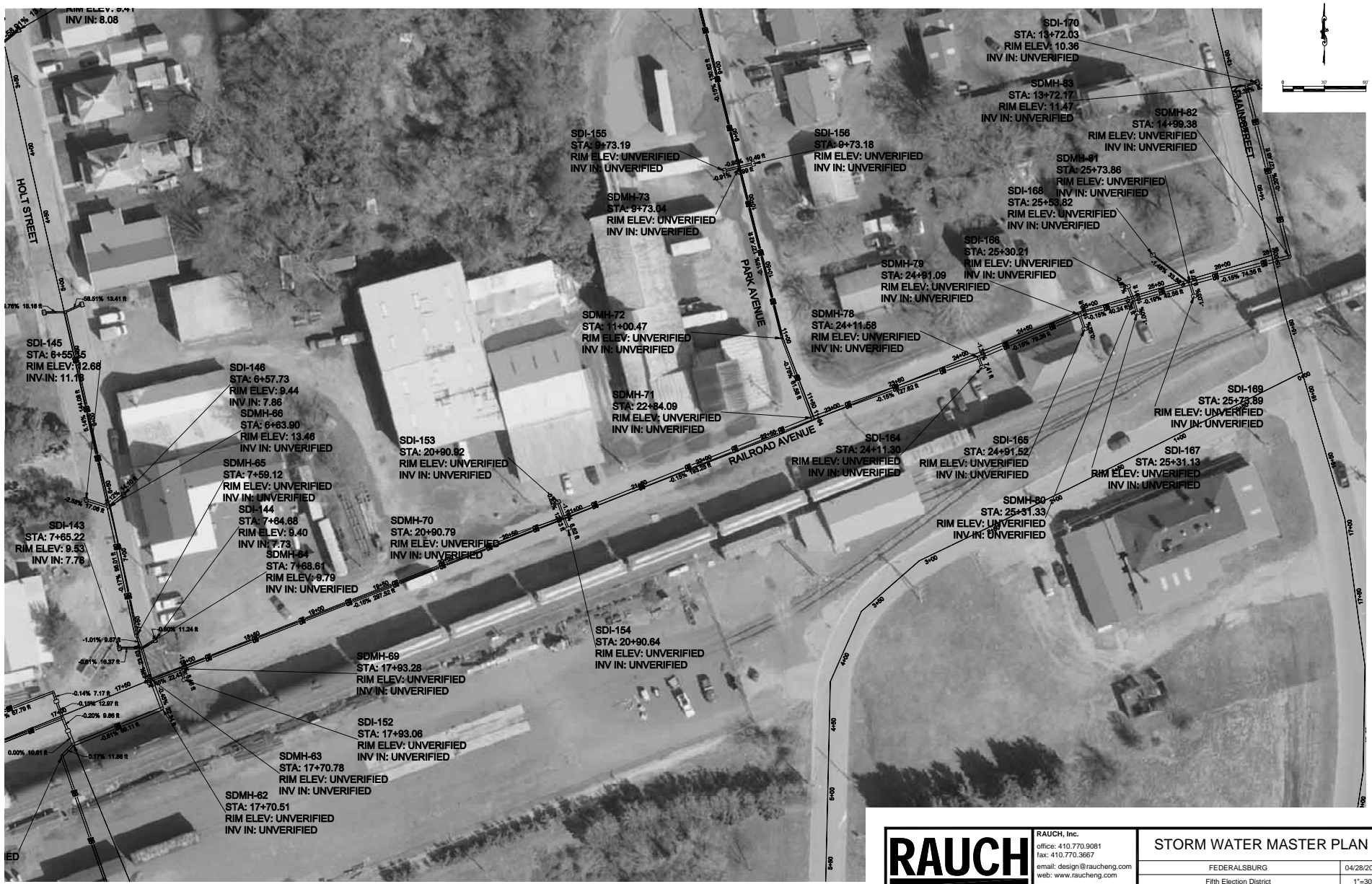
SDI-129
 STA: 14+31.97
 RIM ELEV: 29.30
 INV IN: UNVERIFIED

SDI-128
 STA: 14+32.23
 RIM ELEV: 30.20
 INV IN: UNVERIFIED

RAUCH
 engineering design & development services

RAUCH, Inc.
 office: 410.770.0081
 fax: 410.770.3667
 email: design@raucheng.com
 web: www.raucheng.com
 110 N Washington St
 Easton, MD 21601

STORM WATER MASTER PLAN	
FEDERALSBURG	04/28/2014
Fifth Election District	1"=30'
Caroline County, Maryland	17 OF 21



<p>RAUCH engineering design & development services</p>	<p>RAUCH, Inc. office: 410.770.9081 fax: 410.770.3667 email: design@raucheng.com web: www.raucheng.com 110 N Washington St Easton, MD 21601</p>	<p>STORM WATER MASTER PLAN</p>	
	<p>FEDERALSBURG Fifth Election District Caroline County, Maryland</p>	<p>04/28/2014 1"=30' 19 OF 21</p>	



SDI-129
 STA: 14+31.97
 RIM ELEV: 29.30
 INV IN: UNVERIFIED

SDI-128
 STA: 14+32.23
 RIM ELEV: 30.20
 INV IN: UNVERIFIED

SDI-130
 STA: 14+75.99
 RIM ELEV: 30.15
 INV IN: 26.90

SDMH-44
 STA: 8+17.64
 RIM ELEV: UNVERIFIED
 INV IN: UNVERIFIED

SDI-133
 STA: 7+76.12
 RIM ELEV: UNVERIFIED
 INV IN: UNVERIFIED

SDI-132
 STA: 6+57.63
 RIM ELEV: UNVERIFIED
 INV IN: UNVERIFIED

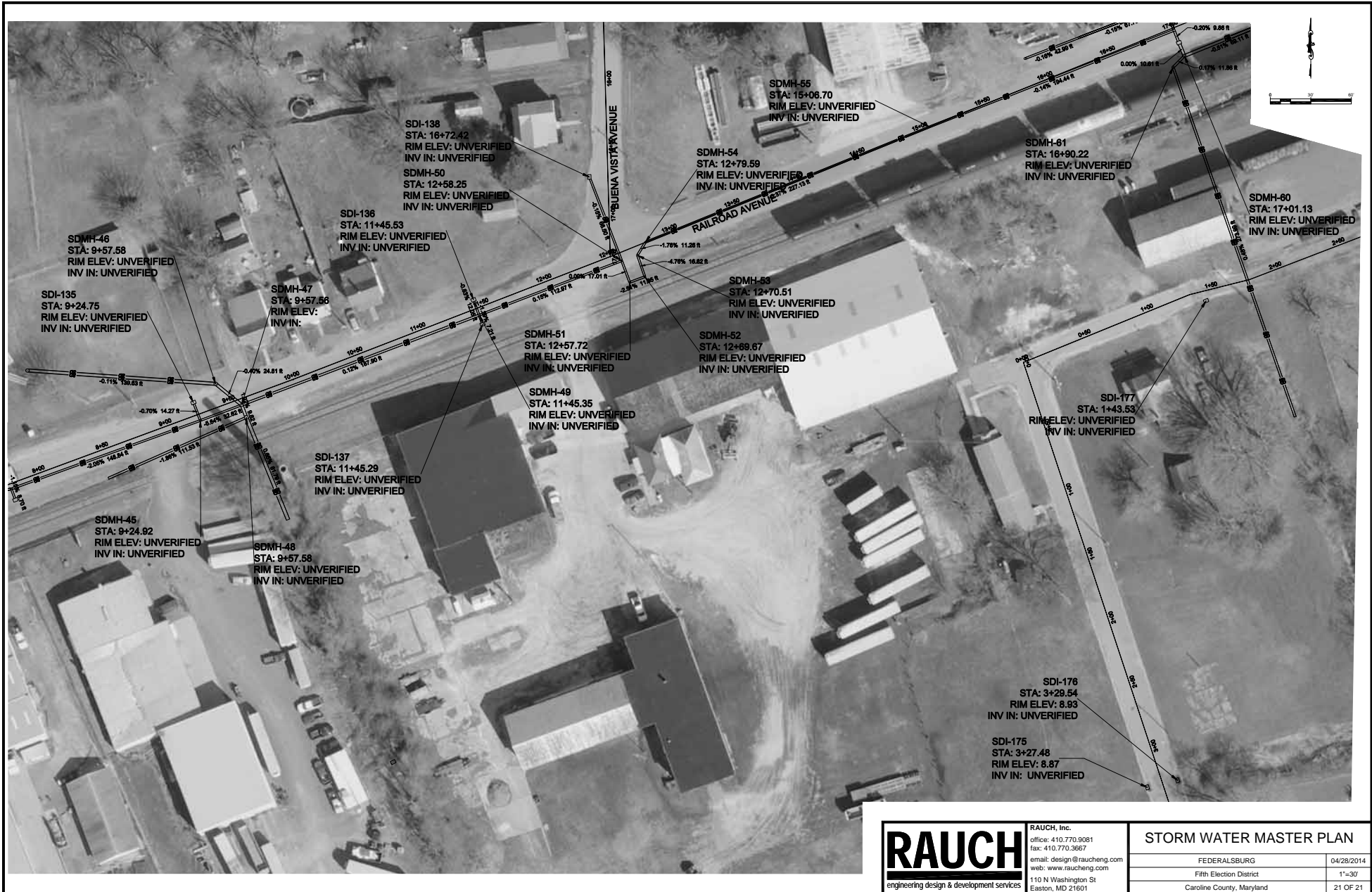
SDI-134
 STA: 7+76.18
 RIM ELEV: UNVERIFIED
 INV IN: UNVERIFIED

SDI-131
 STA: 17+88.78
 RIM ELEV: 30.57
 INV IN: UNVERIFIED

RAUCH
 engineering design & development services

RAUCH, Inc.
 office: 410.770.0081
 fax: 410.770.3667
 email: design@raucheng.com
 web: www.raucheng.com
 110 N Washington St
 Easton, MD 21601

STORM WATER MASTER PLAN	
FEDERALSBURG	04/28/2014
Fifth Election District	1"=30'
Caroline County, Maryland	20 OF 21



SDMH-46
STA: 9+57.58
RIM ELEV: UNVERIFIED
INV IN: UNVERIFIED

SDI-135
STA: 9+24.75
RIM ELEV: UNVERIFIED
INV IN: UNVERIFIED

SDMH-45
STA: 9+24.92
RIM ELEV: UNVERIFIED
INV IN: UNVERIFIED

SDMH-48
STA: 9+57.58
RIM ELEV: UNVERIFIED
INV IN: UNVERIFIED

SDMH-47
STA: 9+57.56
RIM ELEV: UNVERIFIED
INV IN: UNVERIFIED

SDI-137
STA: 11+45.29
RIM ELEV: UNVERIFIED
INV IN: UNVERIFIED

SDI-136
STA: 11+45.53
RIM ELEV: UNVERIFIED
INV IN: UNVERIFIED

SDI-138
STA: 16+72.42
RIM ELEV: UNVERIFIED
INV IN: UNVERIFIED

SDMH-50
STA: 12+58.25
RIM ELEV: UNVERIFIED
INV IN: UNVERIFIED

SDMH-51
STA: 12+57.72
RIM ELEV: UNVERIFIED
INV IN: UNVERIFIED

SDMH-49
STA: 11+45.35
RIM ELEV: UNVERIFIED
INV IN: UNVERIFIED

SDMH-53
STA: 12+70.51
RIM ELEV: UNVERIFIED
INV IN: UNVERIFIED

SDMH-52
STA: 12+69.67
RIM ELEV: UNVERIFIED
INV IN: UNVERIFIED

SDMH-55
STA: 15+06.70
RIM ELEV: UNVERIFIED
INV IN: UNVERIFIED

SDMH-54
STA: 12+79.59
RIM ELEV: UNVERIFIED
INV IN: UNVERIFIED

SDMH-81
STA: 16+90.22
RIM ELEV: UNVERIFIED
INV IN: UNVERIFIED

SDMH-60
STA: 17+01.13
RIM ELEV: UNVERIFIED
INV IN: UNVERIFIED

SDI-177
STA: 1+43.53
RIM ELEV: UNVERIFIED
INV IN: UNVERIFIED

SDI-176
STA: 3+29.54
RIM ELEV: 8.93
INV IN: UNVERIFIED

SDI-175
STA: 3+27.48
RIM ELEV: 8.87
INV IN: UNVERIFIED